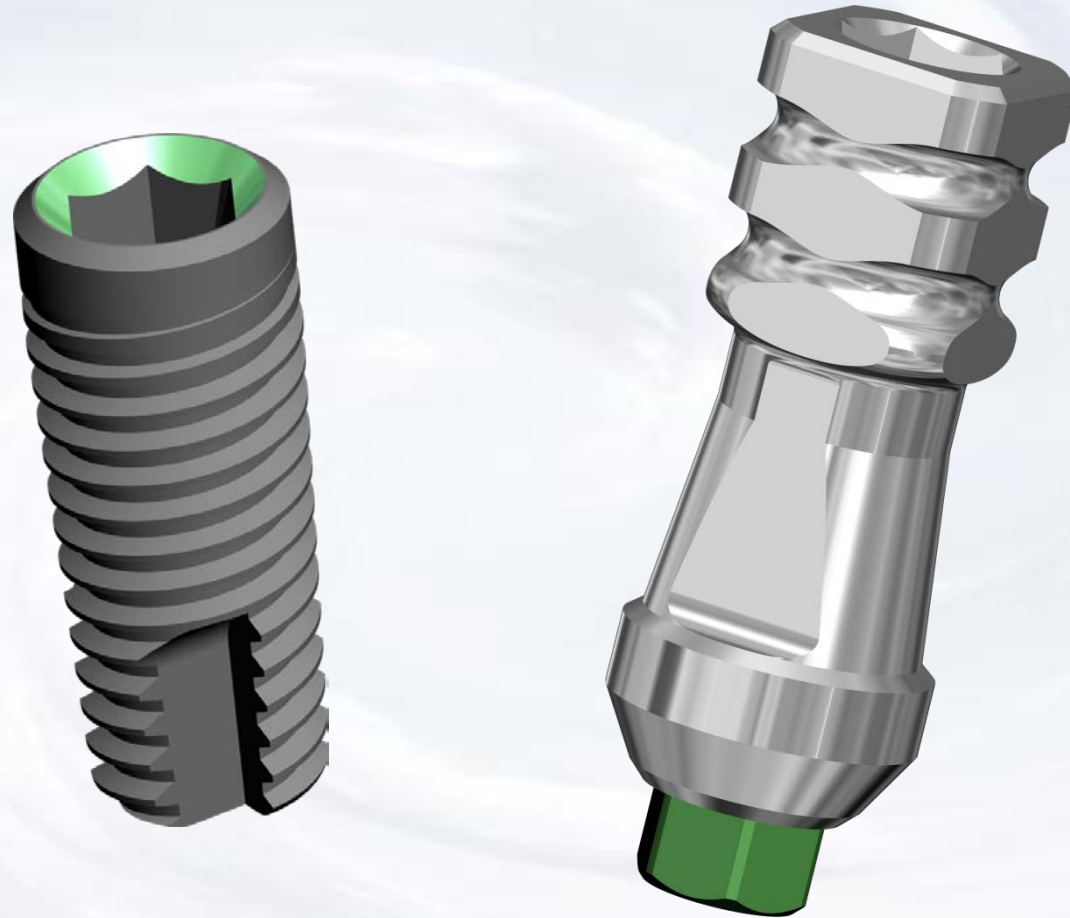


# MPA Abutment for Internal Hex Implant



**Blue Sky Bio**

# MPA Abutment for Internal Hex Implant



The MPA Abutment functions as both the implant level impression coping and the final abutment



**Blue Sky Bio**

# MPA Abutment for Internal Hex Implant



Healing abutment in place



|   | Size                   | Part #    |
|---|------------------------|-----------|
|  | .050 Hex Driver Short  | SDS050    |
|  | .050 Hex Driver Long   | SDL050    |
|  | Torque/Ratchet Wrench  | TR-900-01 |
|  | Thumb Knob for Drivers | TK        |

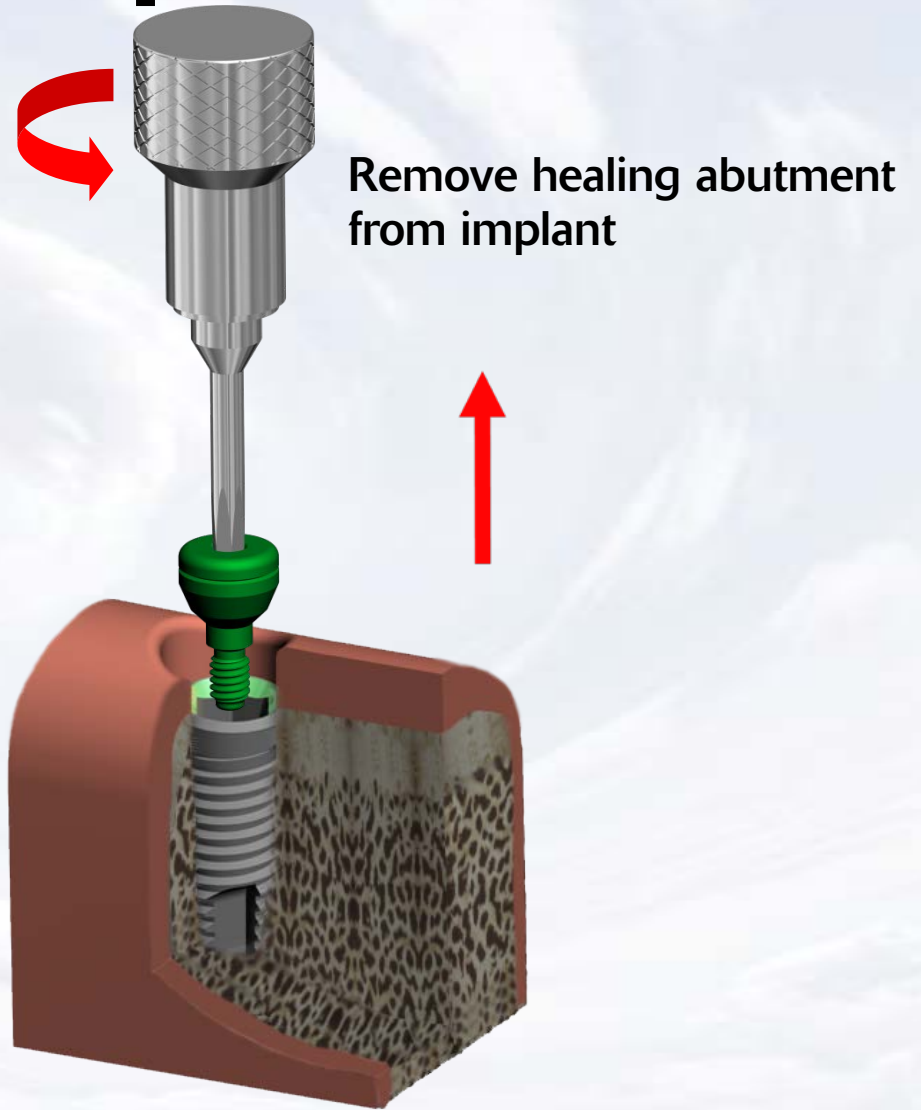
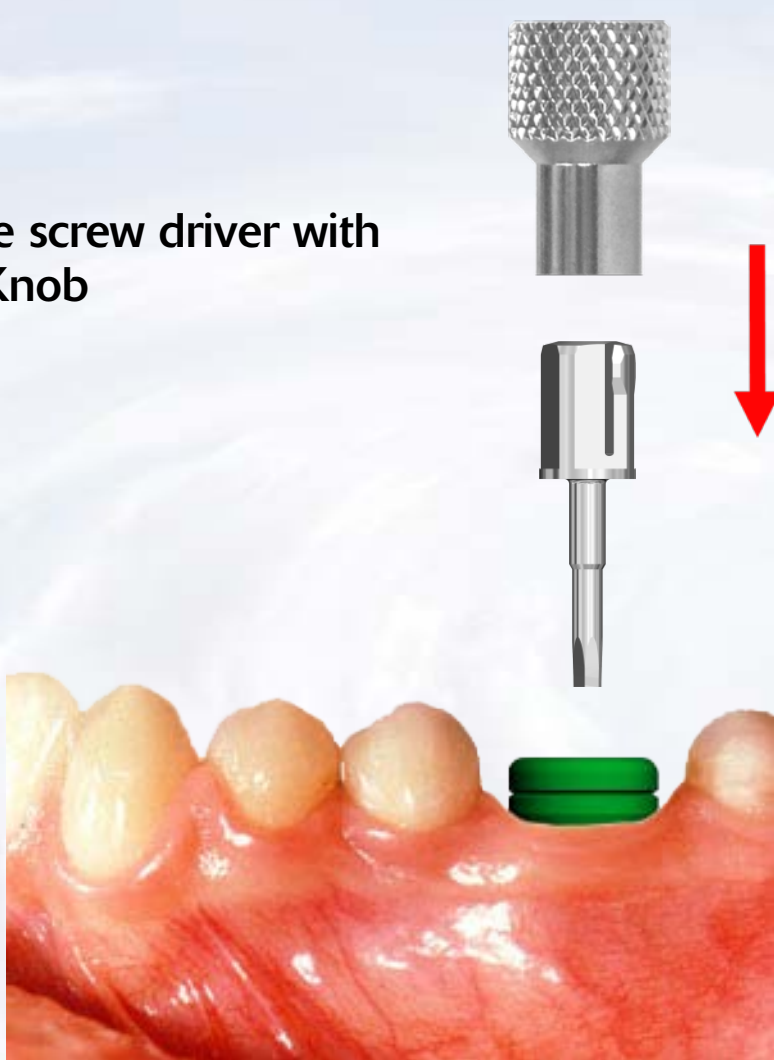
Prosthetic instruments needed



**Blue Sky Bio**

# MPA Abutment for Internal Hex Implant

Assemble screw driver with Thumb Knob

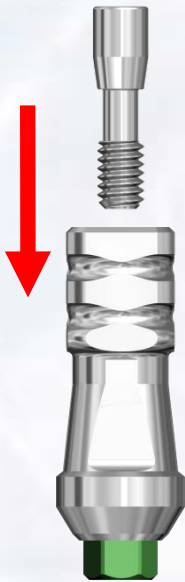


Blue Sky Bio

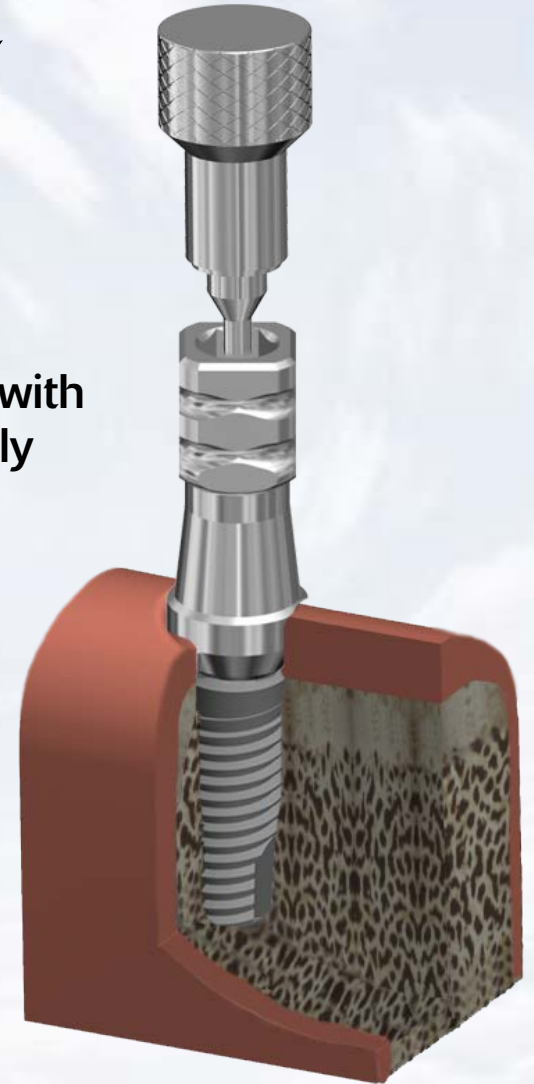
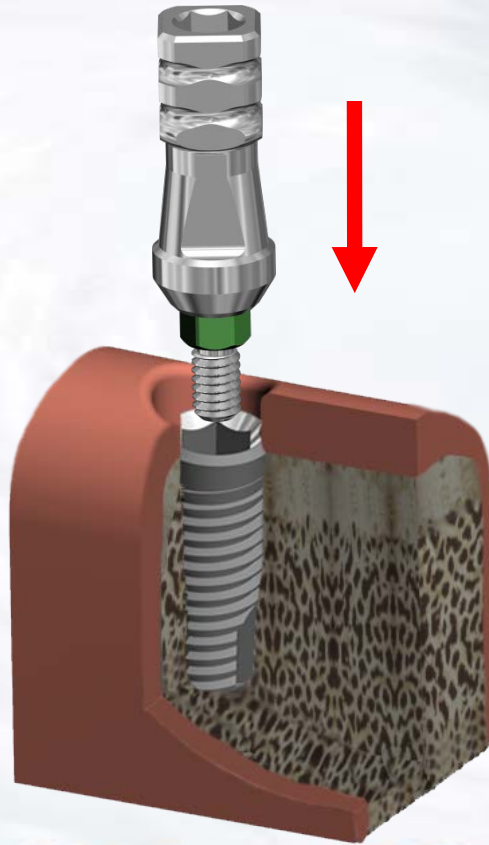
# MPA Abutment for Internal Hex Implant

Seat abutment into implant by aligning the hex of the abutment with the hex of the implant

Insert screw into MPA abutment

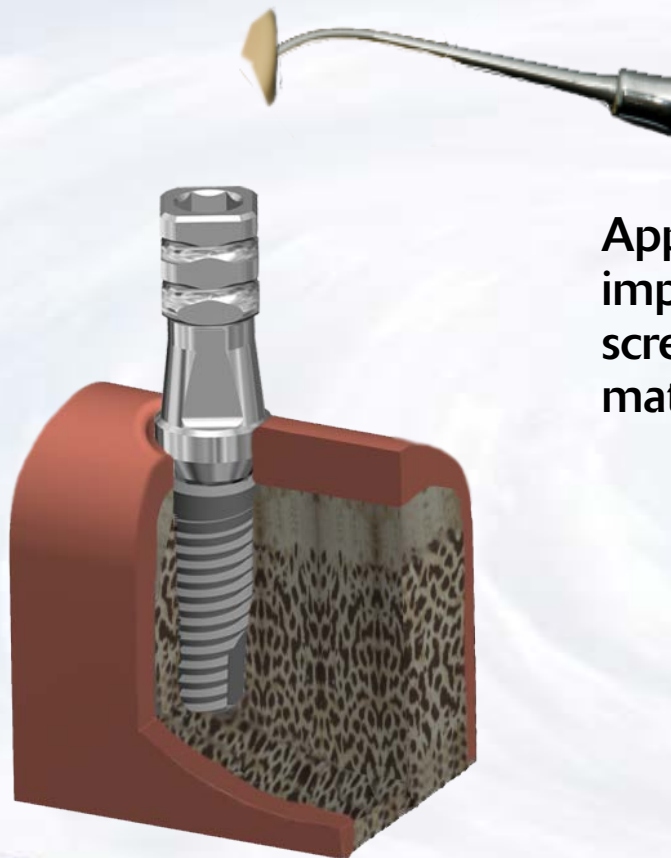


Tighten screw with finger force only

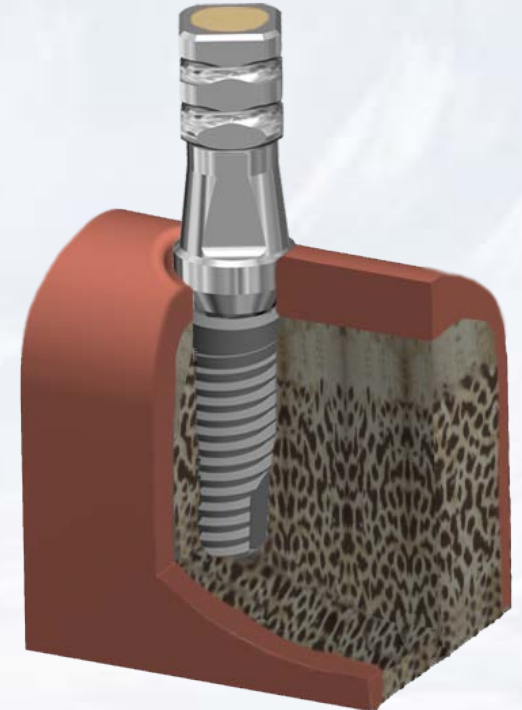


Blue Sky Bio

# MPA Abutment for Internal Hex Implant

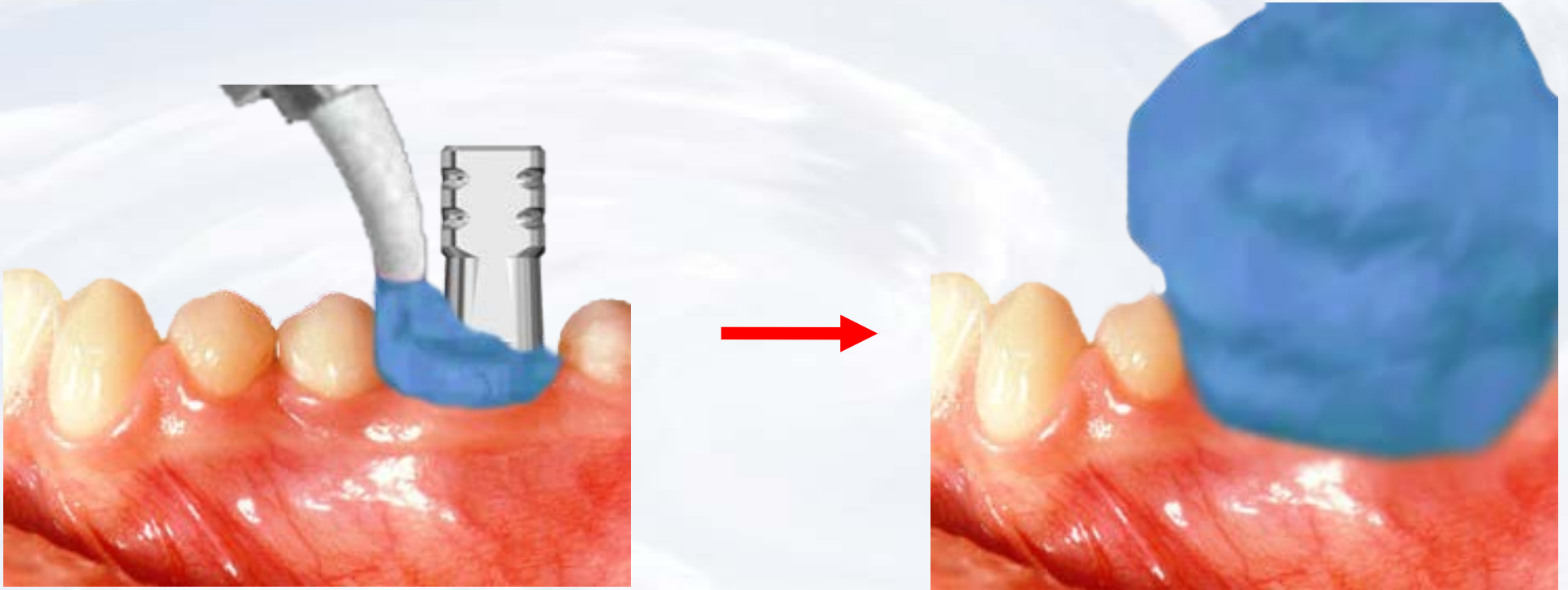


Apply wax to the top of the  
impression transfer to seal  
screw access to keep impression  
material out of the access hole



Blue Sky Bio

# MPA Abutment for Internal Hex Implant

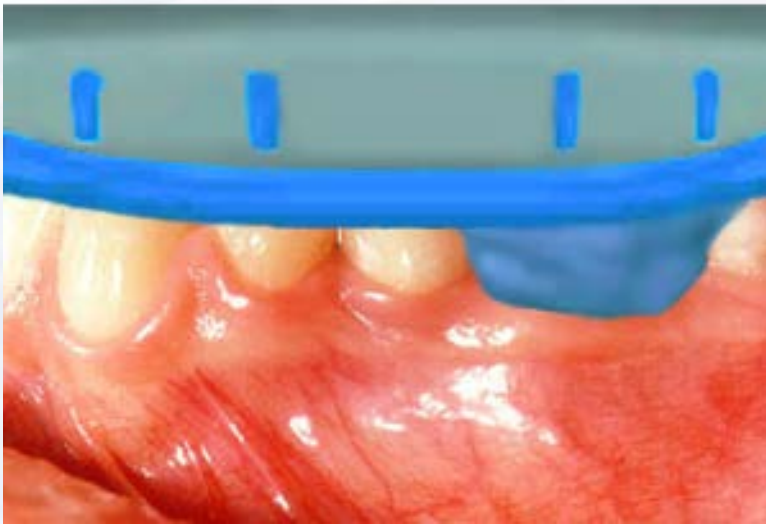


Inject impression material around the abutment

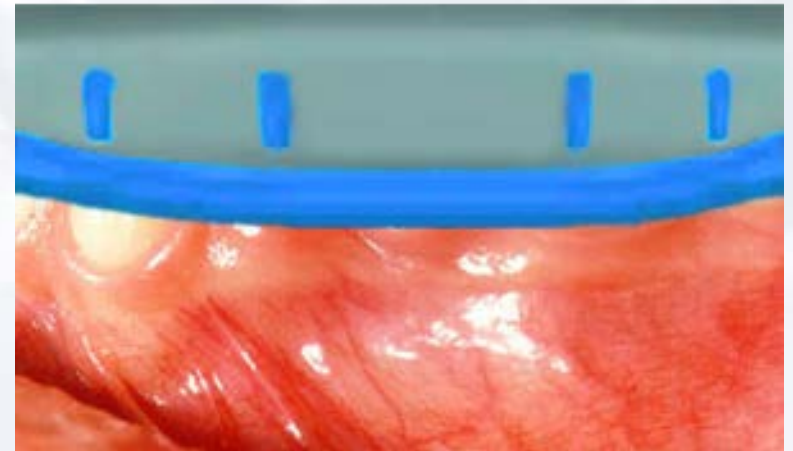


**Blue Sky Bio**

# MPA Abutment for Internal Hex Implant



Insert tray with impression material



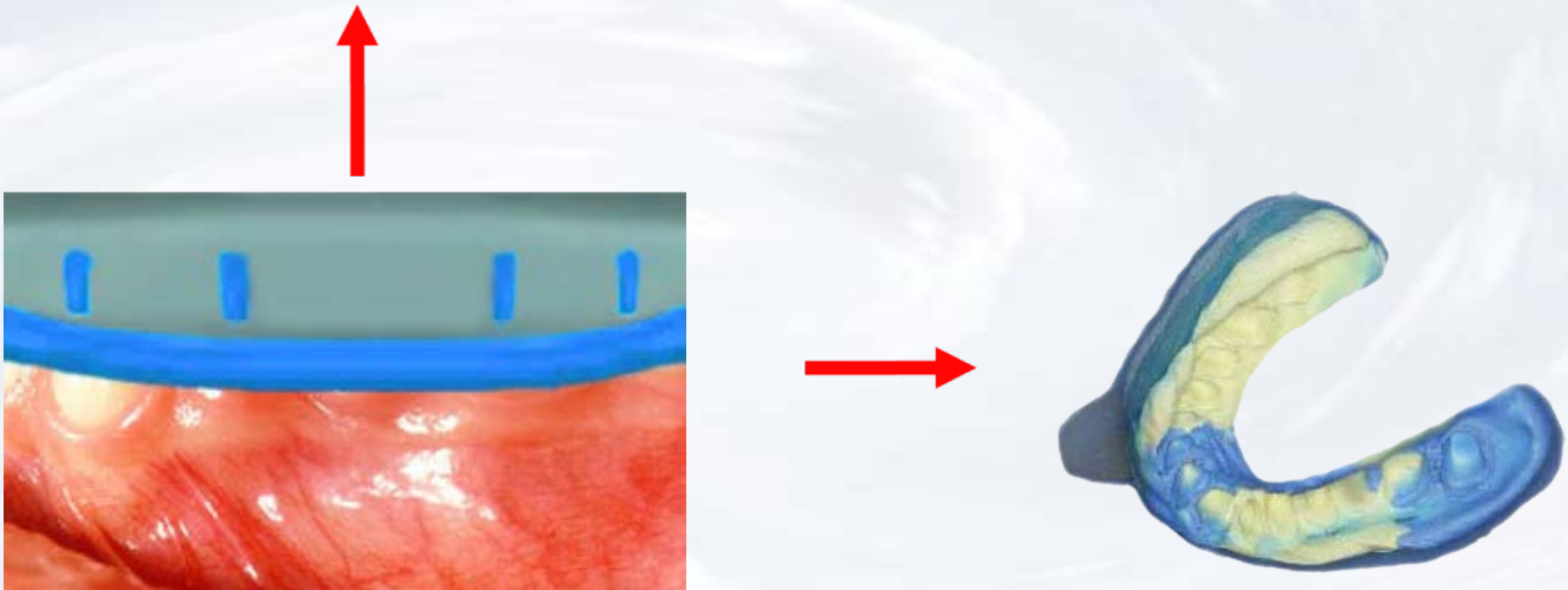
Seat impression to  
capture dental arch



**Blue Sky Bio**



# MPA Abutment for Internal Hex Implant

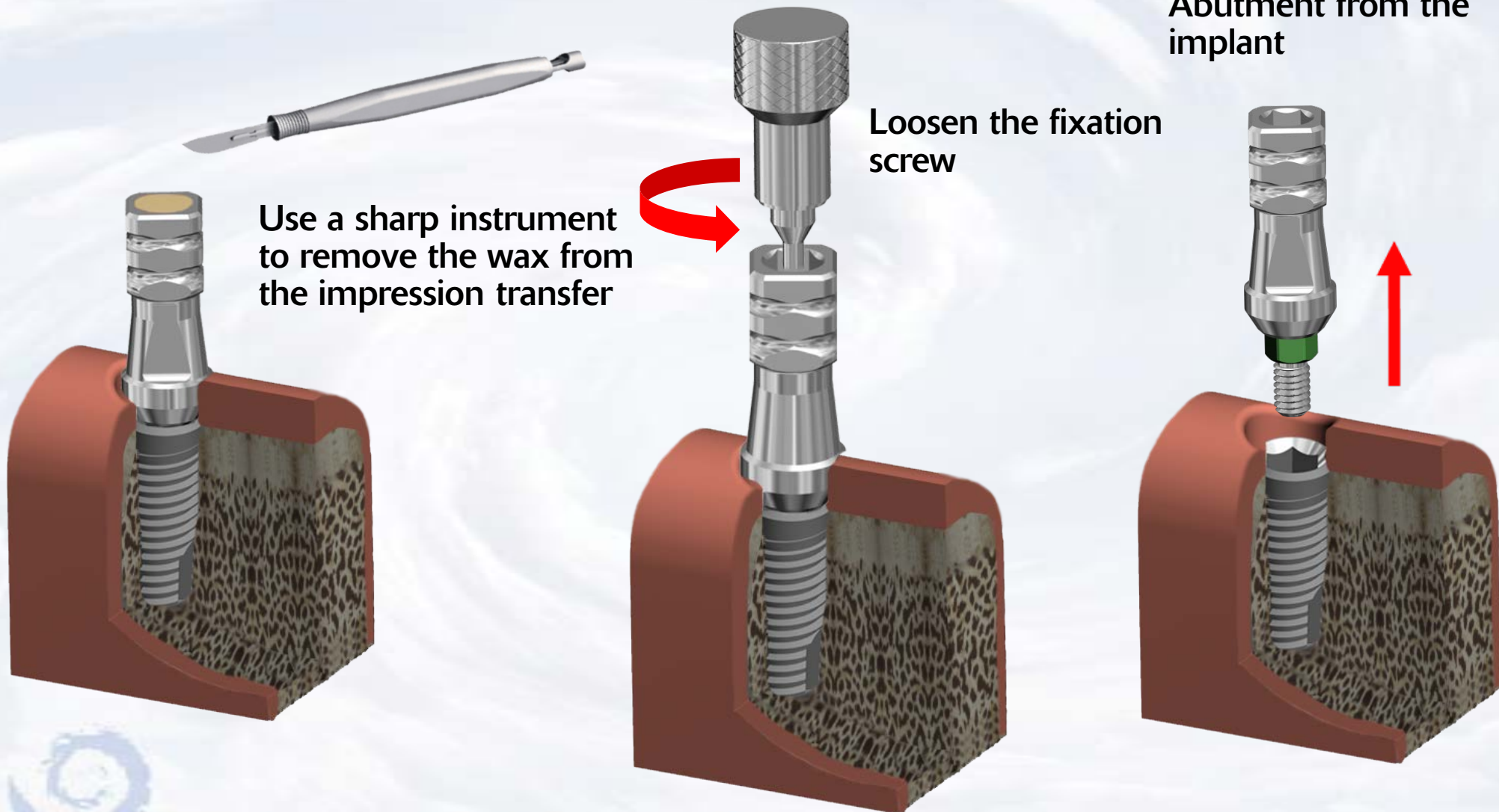


Remove the impression from the mouth when material has set



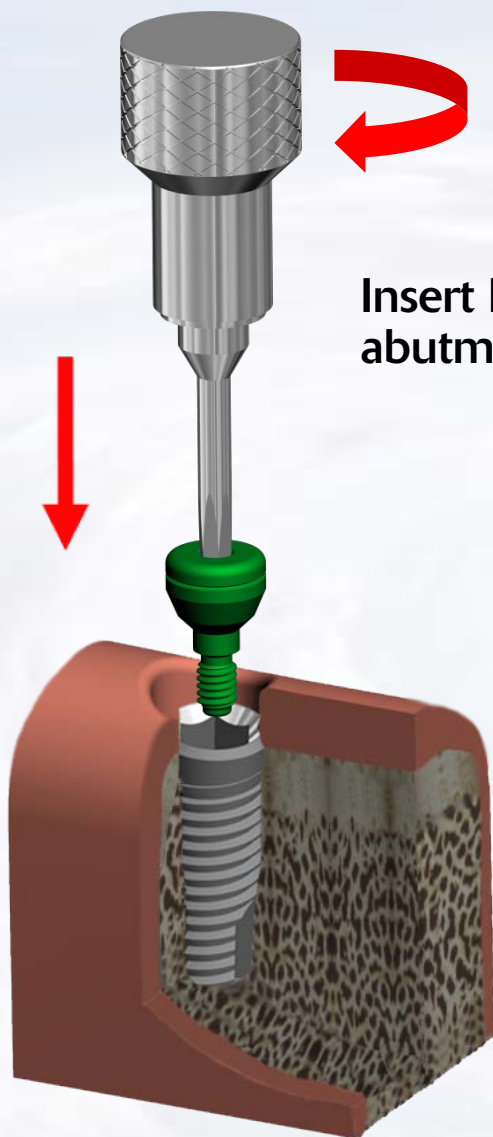
**Blue Sky Bio**

# MPA Abutment for Internal Hex Implant



Blue Sky Bio

# MPA Abutment for Internal Hex Implant



Insert healing  
abutment into implant

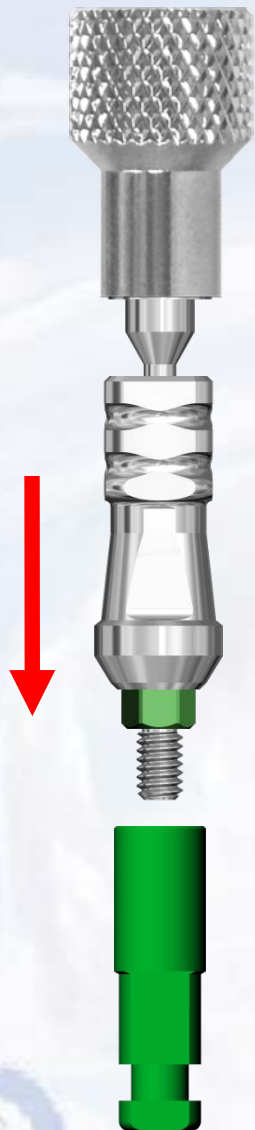


Healing abutment in place



Blue Sky Bio

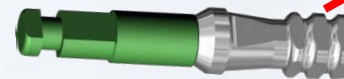
# MPA Abutment for Internal Hex Implant



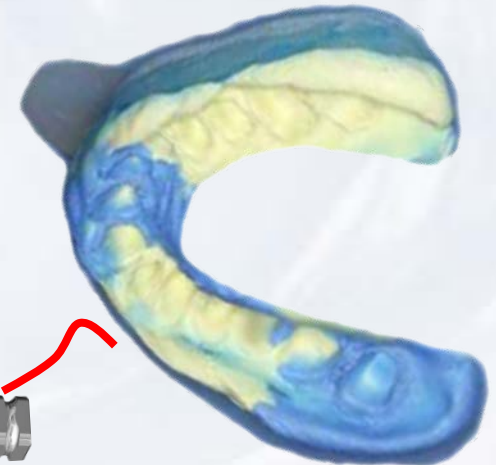
Insert MPA Abutment into implant level analog and tighten fixation screw with finger pressure



Assembled MPA Abutment with implant level analog



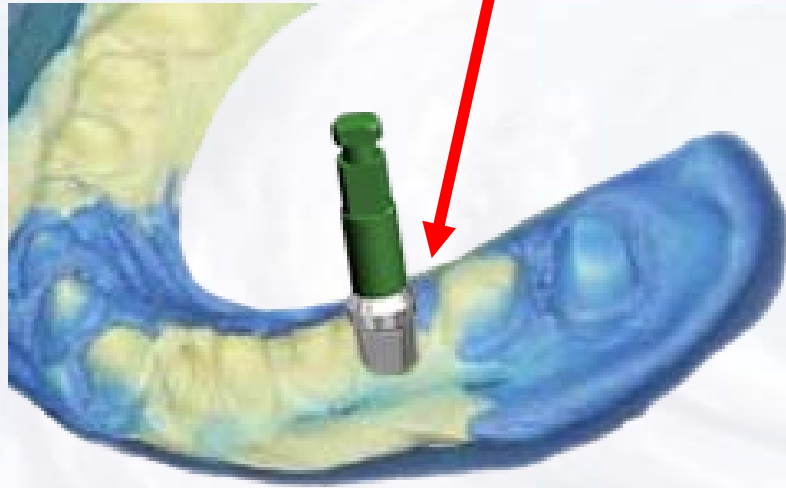
Insert MPA Abutment/analog assembly into impression.



Blue Sky Bio

# MPA Abutment for Internal Hex Implant

Align the flats of MPA Abutment with the flats within the impression and insert the abutment/analog assembly into the impression



MPA Abutment/analog assembly completely seated inside impression



Blue Sky Bio

# MPA Abutment for Internal Hex Implant

Apply soft tissue replica material  
around implant level analog

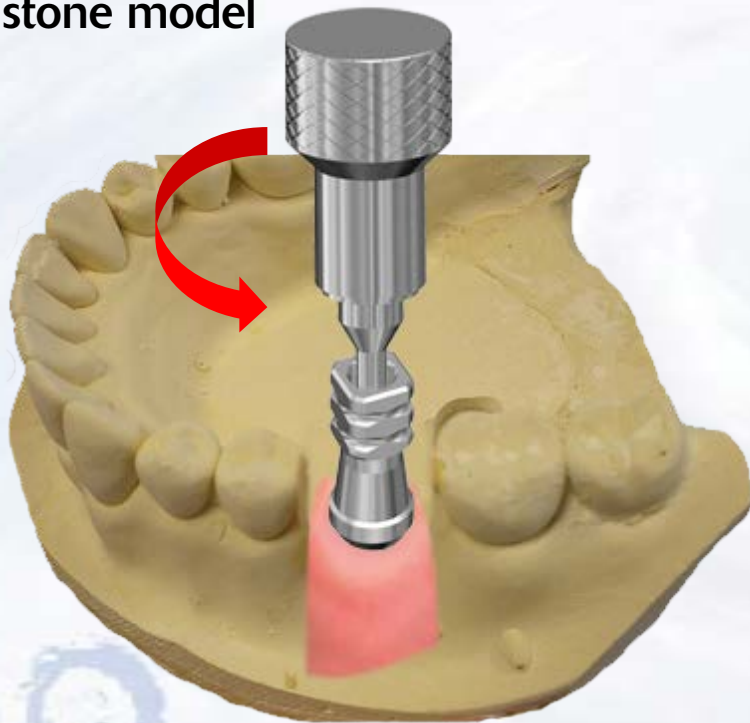
Pour dental stone into impression



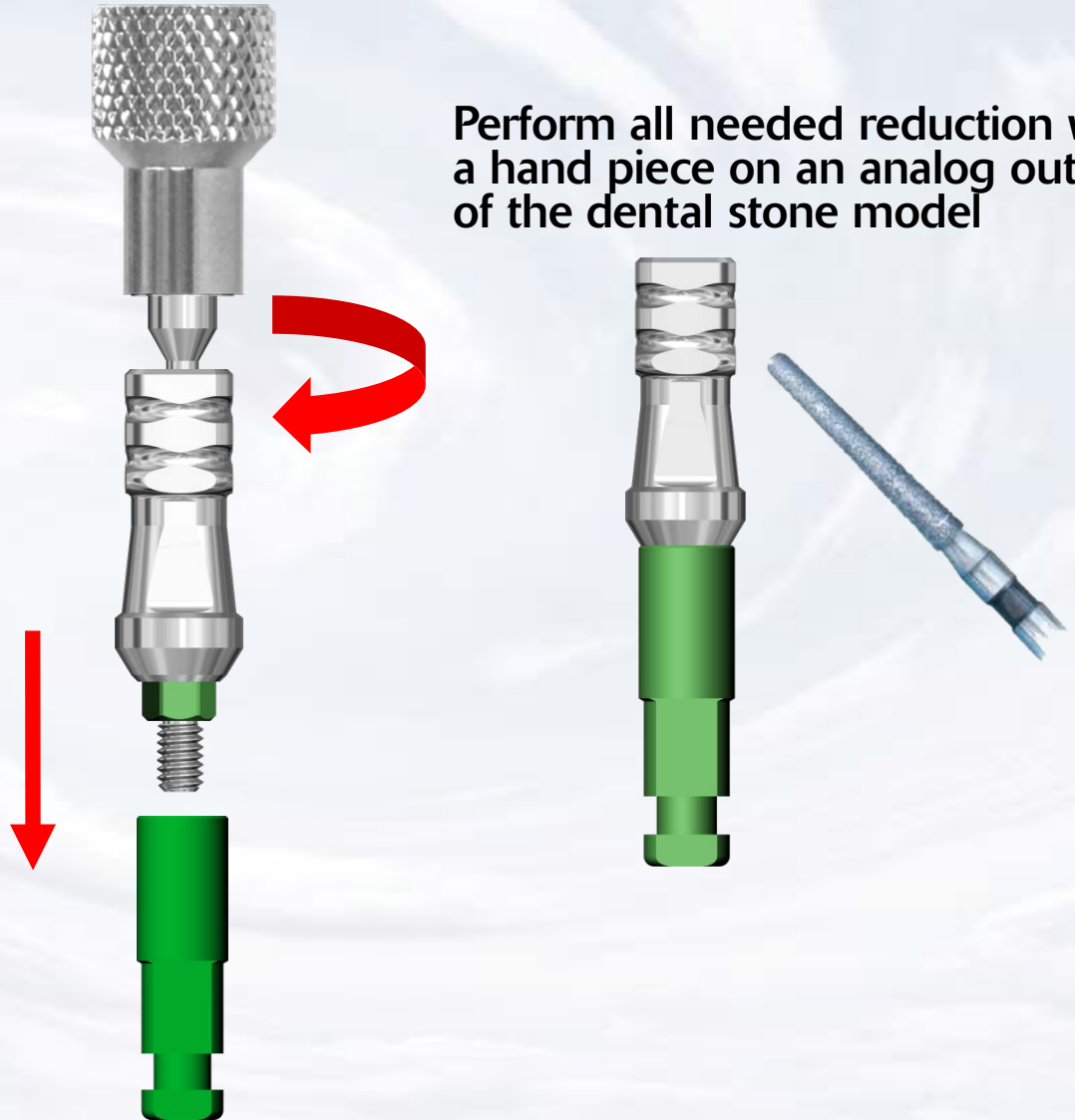
**Blue Sky Bio**

# MPA Abutment for Internal Hex Implant

Remove master cast from impression and after marking the areas for reduction on the abutment, remove it from the stone model



Perform all needed reduction with a hand piece on an analog outside of the dental stone model

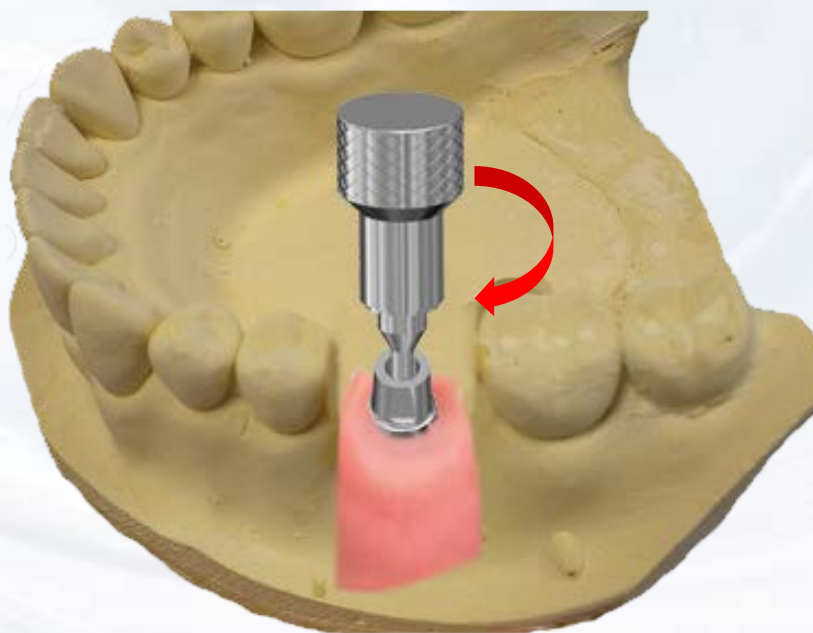


Blue Sky Bio

# MPA Abutment for Internal Hex Implant

Insert the customized abutment into the model

Remove the adjusted Abutment from the analog



Blue Sky Bio

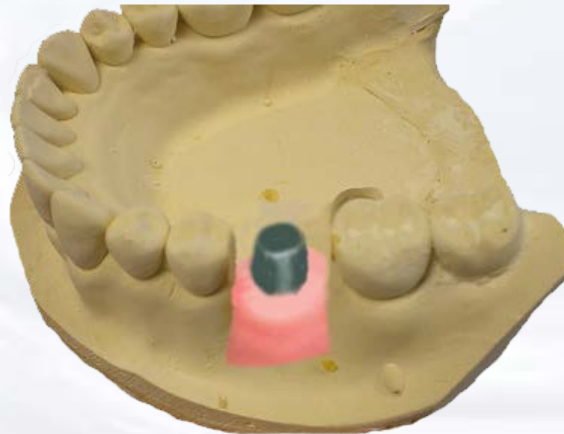


# MPA Abutment for Internal Hex Implant

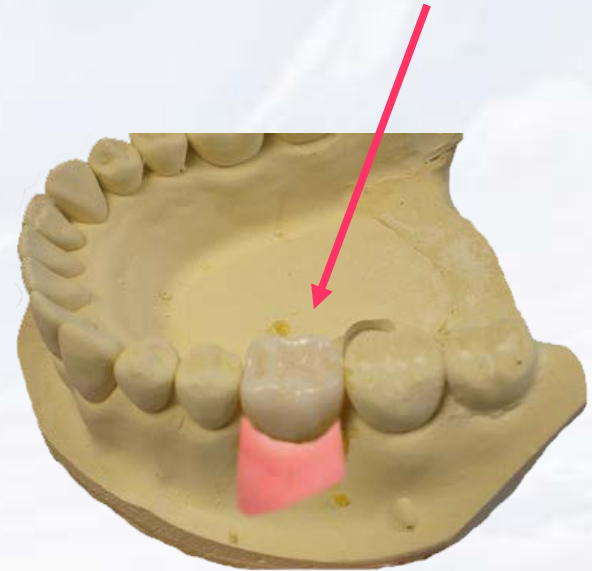
Add die spacer on the abutment and wax up the undercasting directly on the abutment



Cast wax up in usual manner and try in the casting on the abutment



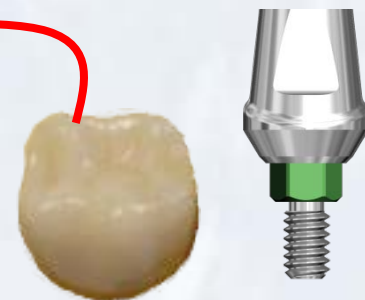
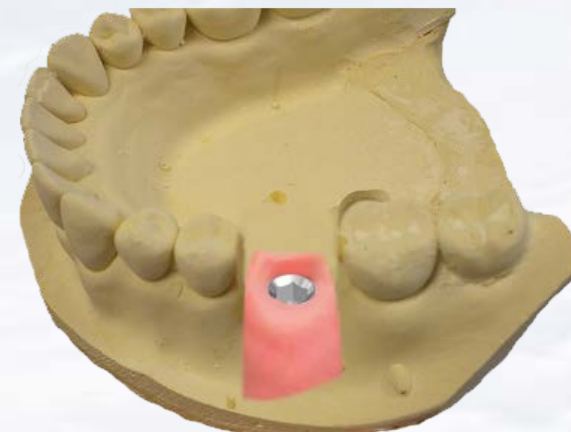
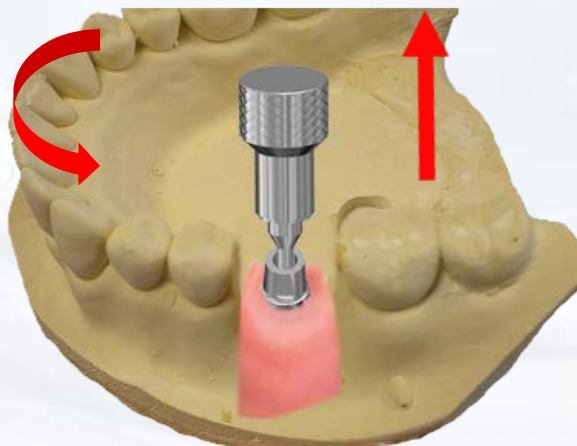
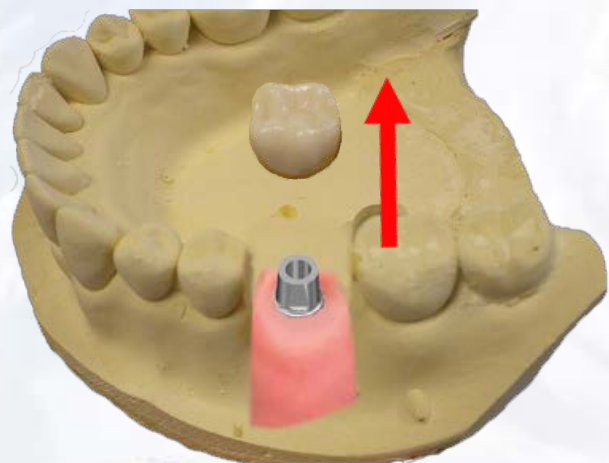
Stack and fire the ceramic in the usual manner and finish the restoration



Blue Sky Bio

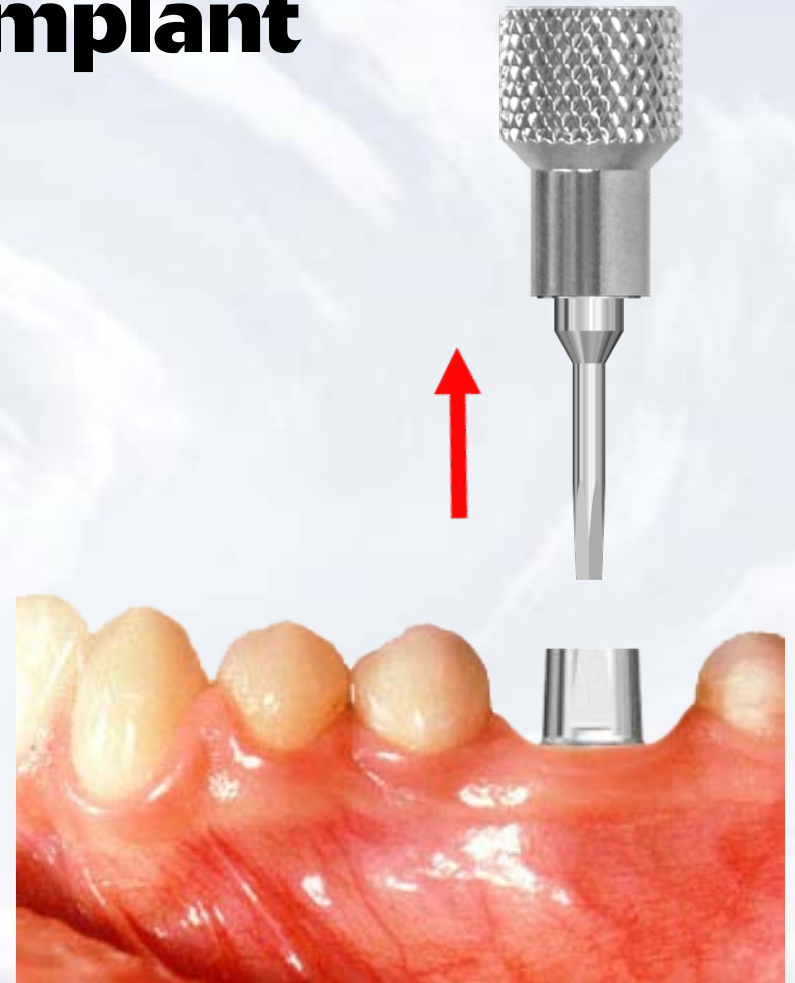
# MPA Abutment for Internal Hex Implant

Remove crown and abutment from model



Blue Sky Bio

# MPA Abutment for Internal Hex Implant



Remove healing abutment and insert final abutment into implant orienting it according to the instructions from the laboratory



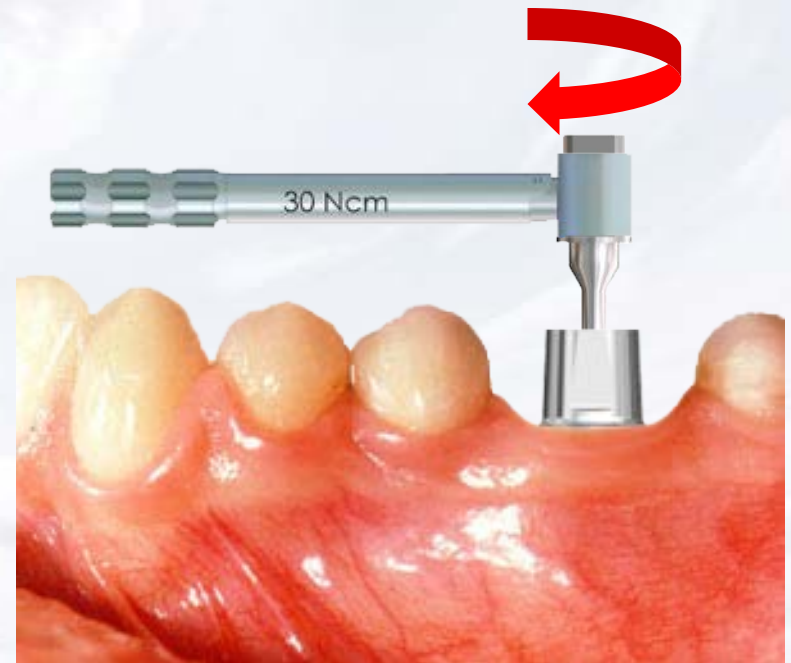
**Blue Sky Bio**

# MPA Abutment for Internal Hex Implant

Insert the hex driver within the 30Ncm torque ratchet



Insert driver into the abutment screw and turn torque ratchet clockwise until torque of 30 Ncm is reached and the head of the ratchet releases



**Blue Sky Bio**

# MPA Abutment for Internal Hex Implant



Cement restoration on abutment



**Blue Sky Bio**