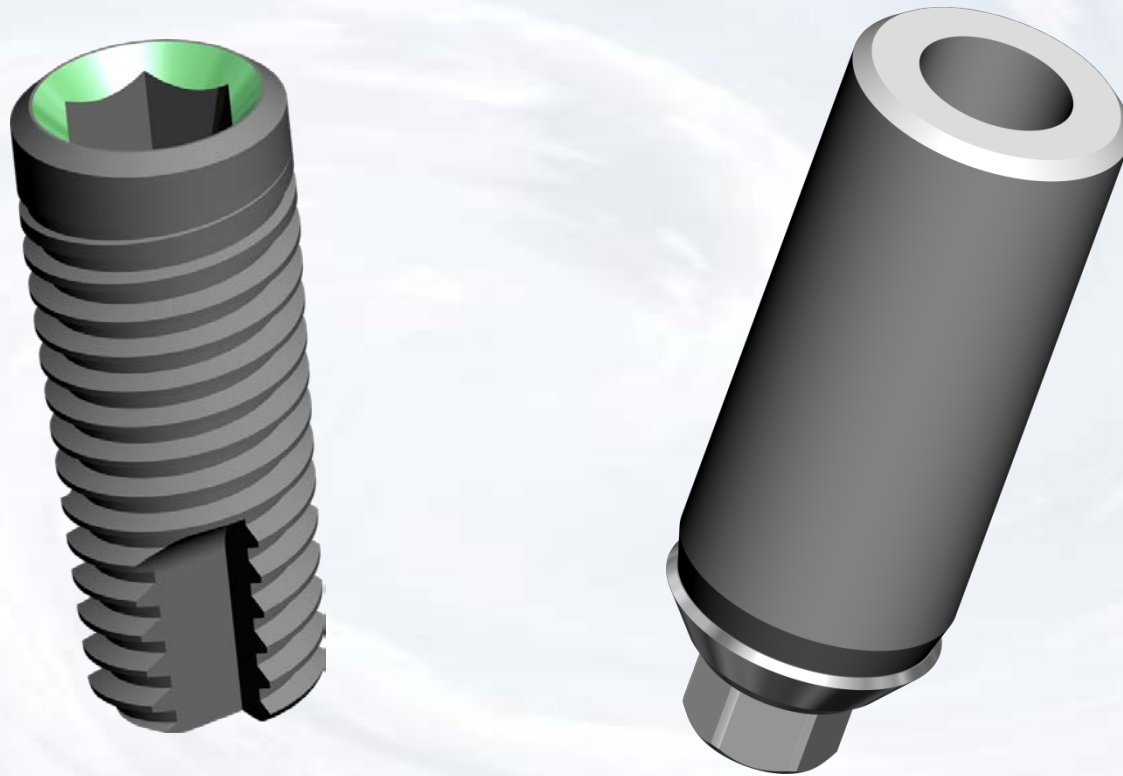


# Internal Hex UCLA Abutment



**Blue Sky Bio**

# Internal Hex UCLA Abutment







Healing abutment in place

The presentation that follows lists only one combination of parts  
Obviously the clinical situation may call for substitution of another part on this slide



**Blue Sky Bio**

# Internal Hex UCLA Abutment

	Size	Part #
	.050 Hex Driver Short	SDS050
	.050 Hex Driver Long	SDL050
	Torque/Ratchet Wrench	TR-900-01
	Thumb Knob for Drivers	TK

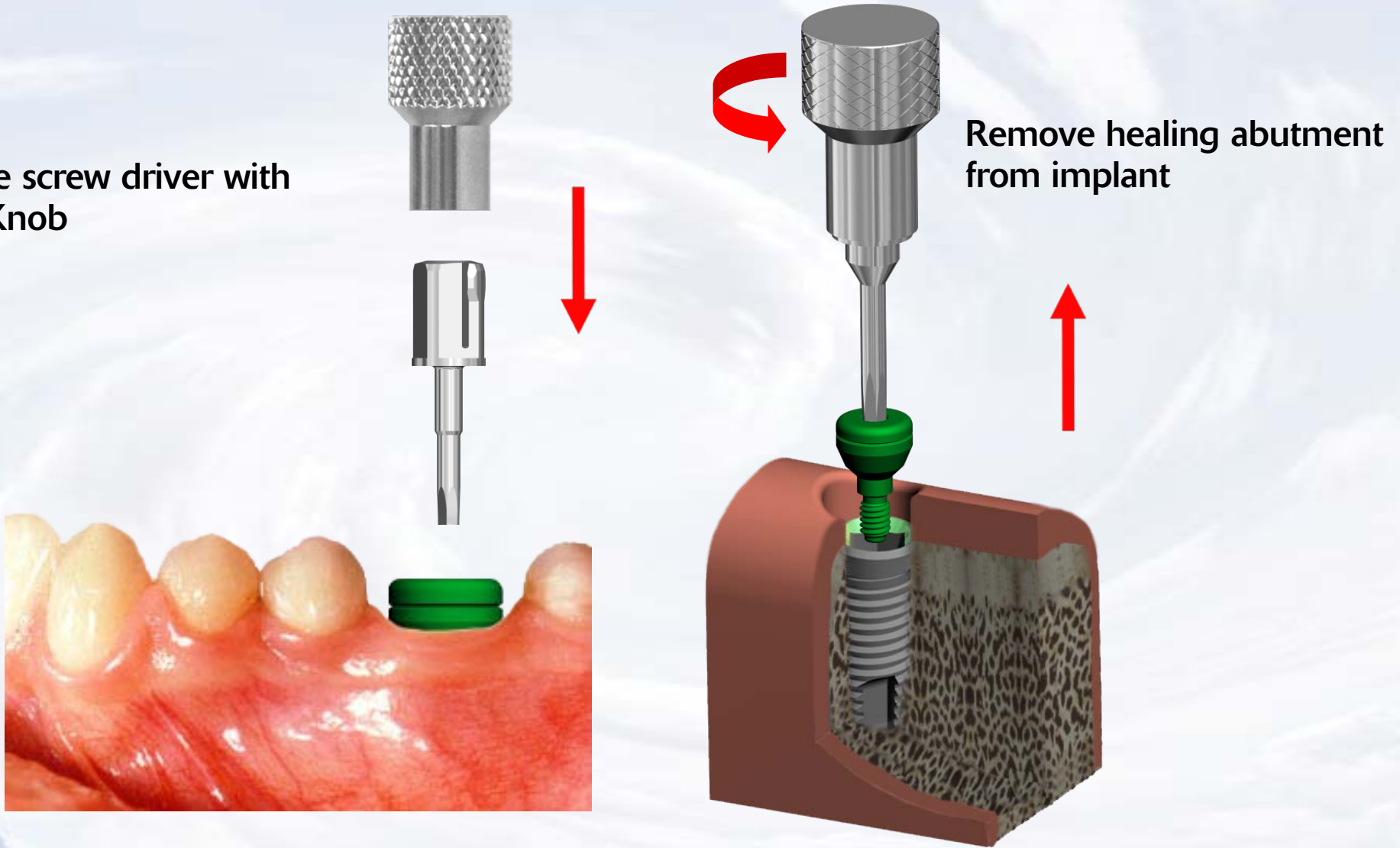
Prosthetic instruments needed



**Blue Sky Bio**

# Internal Hex UCLA Abutment

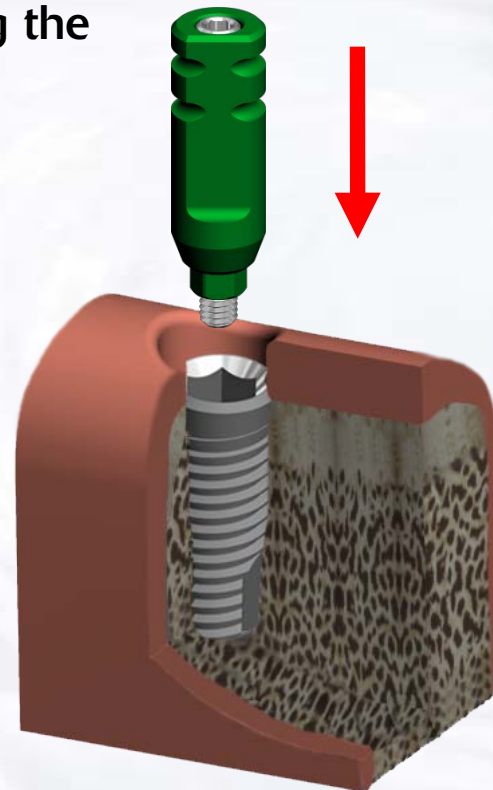
Assemble screw driver with  
Thumb Knob



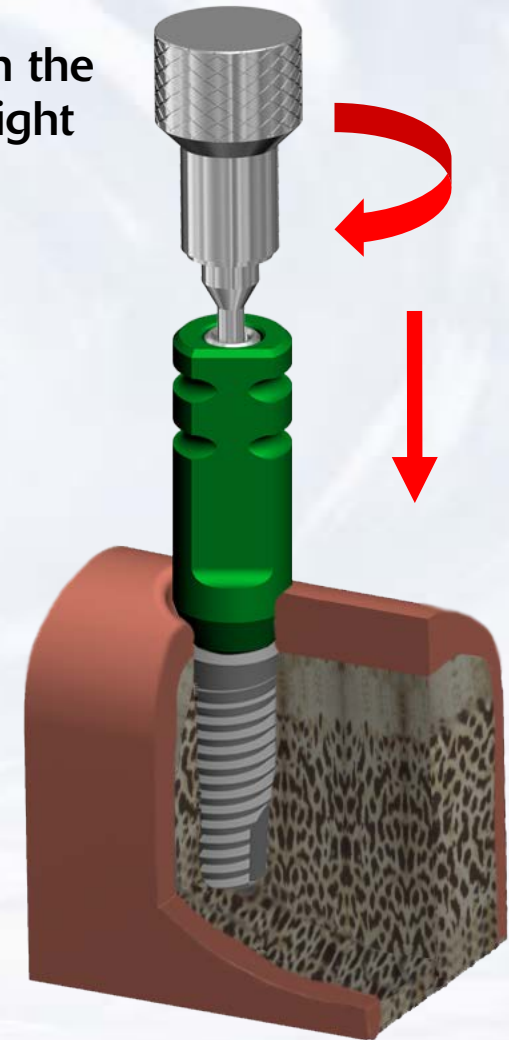
Blue Sky Bio

# Internal Hex UCLA Abutment

Insert the Impression Transfer into the implant ensuring the appropriate orientation

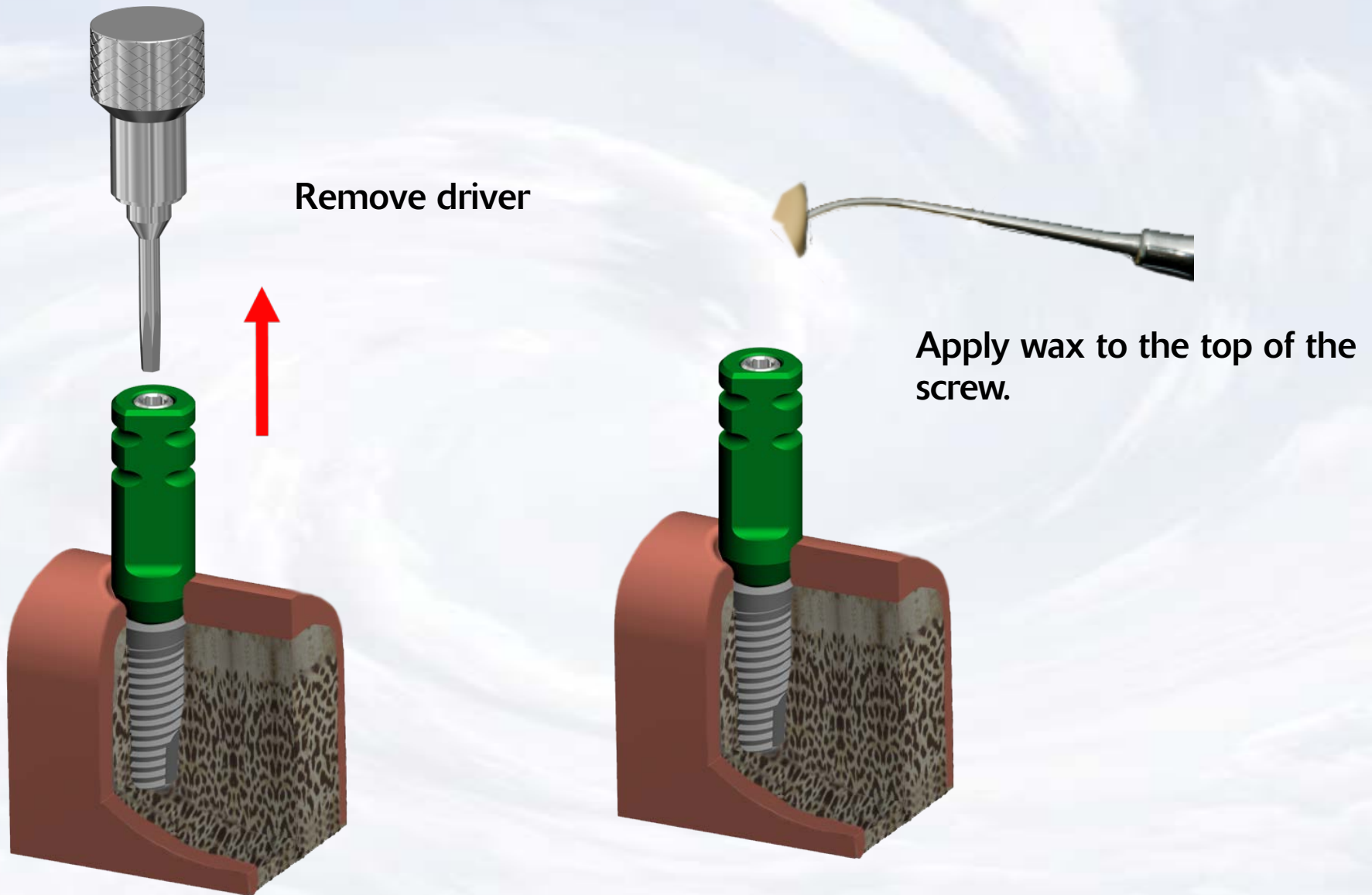


Tighten the screw with the driver assembly with light finger force



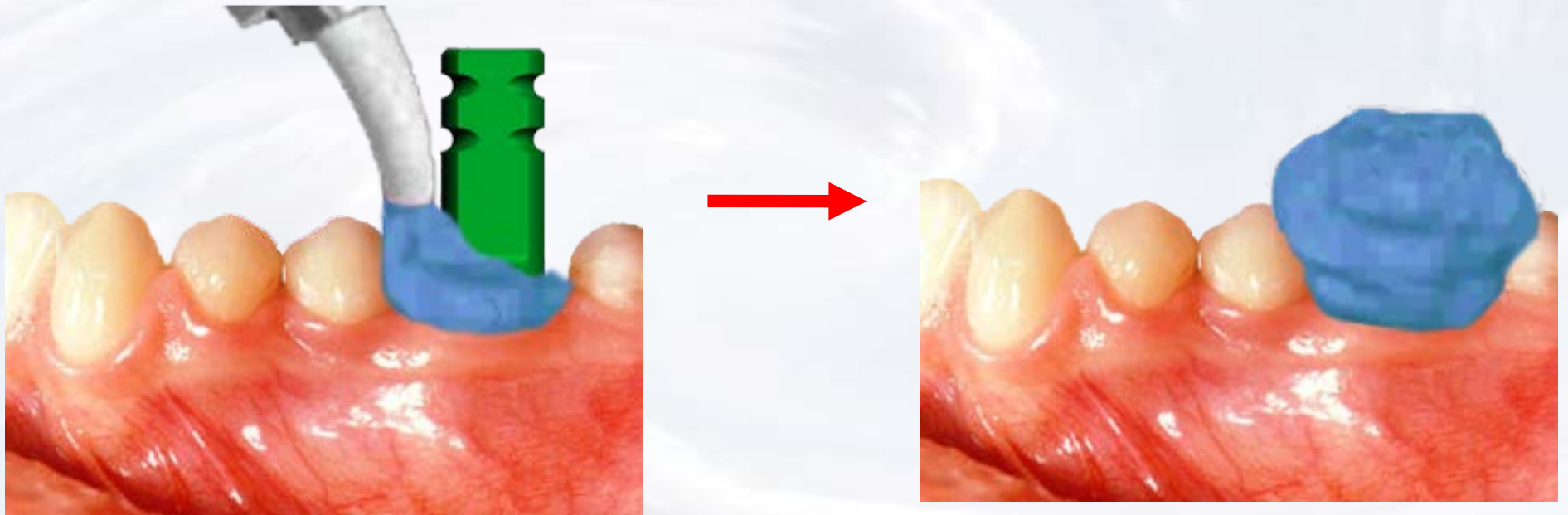
Blue Sky Bio

# Internal Hex UCLA Abutment



Blue Sky Bio

# Internal Hex UCLA Abutment

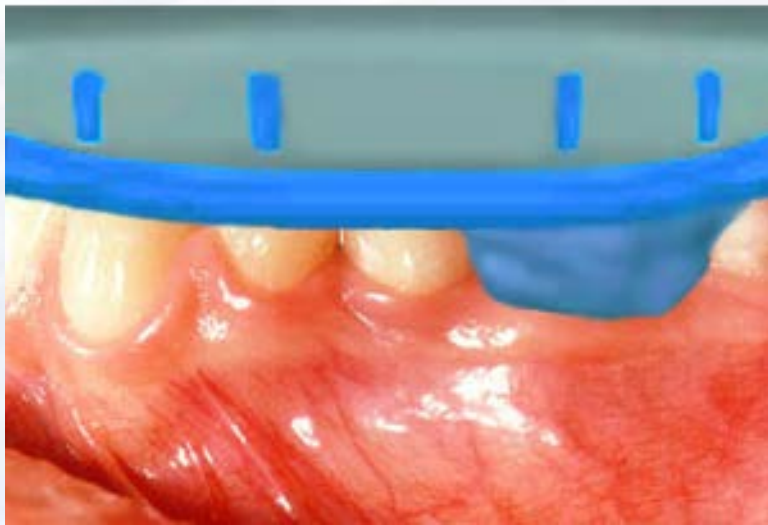


Inject impression material around the abutment

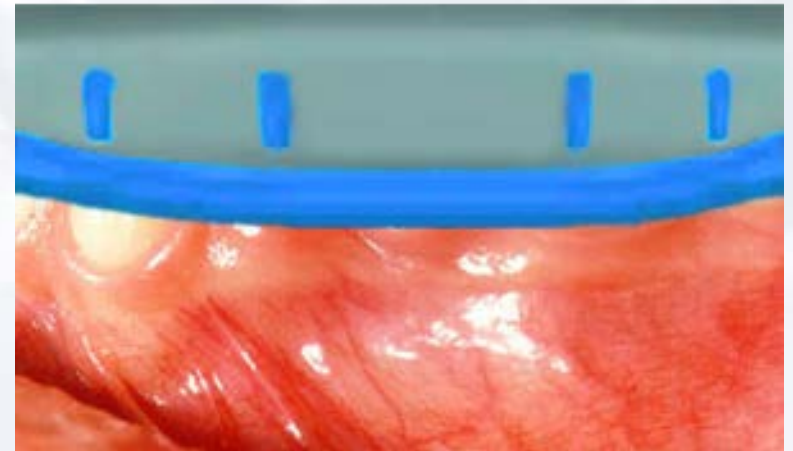


**Blue Sky Bio**

# Internal Hex UCLA Abutment



Insert tray with impression material



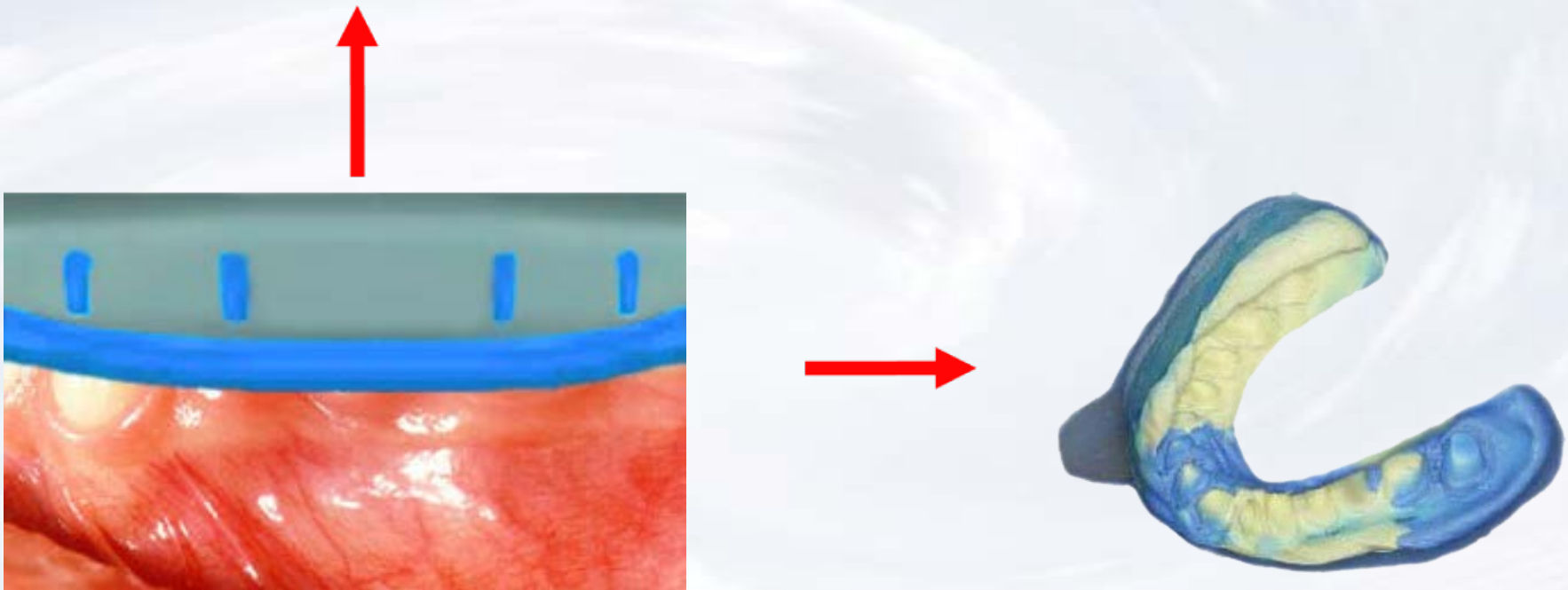
Seat impression to capture dental arch



**Blue Sky Bio**



# Internal Hex UCLA Abutment



Remove the impression from the mouth when material has set

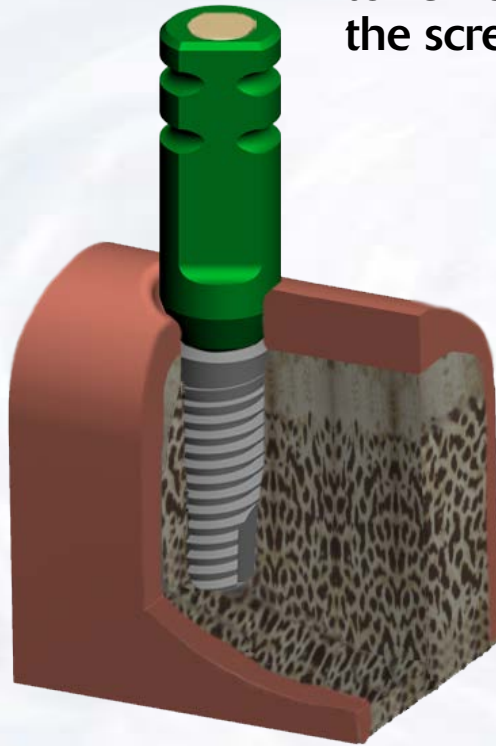


**Blue Sky Bio**

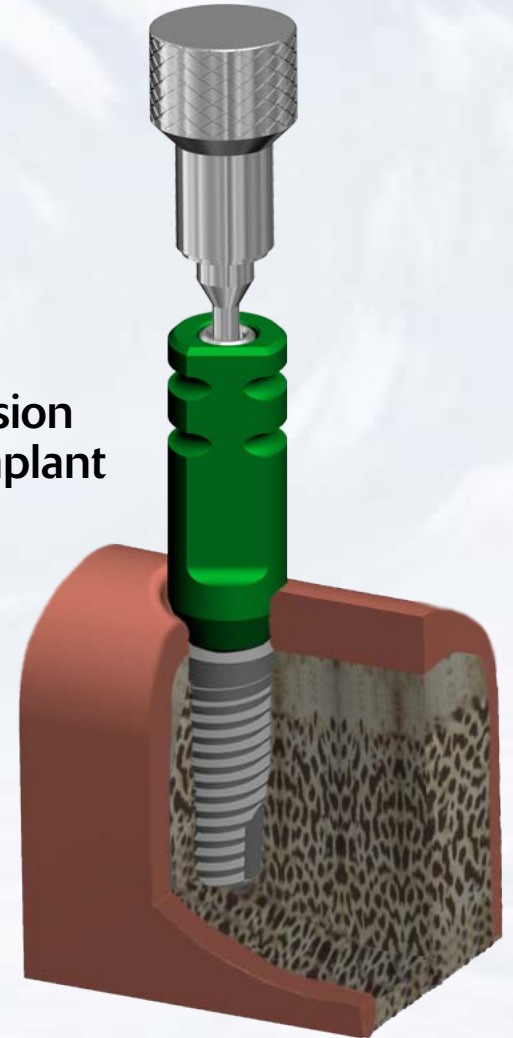
# Internal Hex UCLA Abutment



Use a sharp instrument to remove the wax from the screw

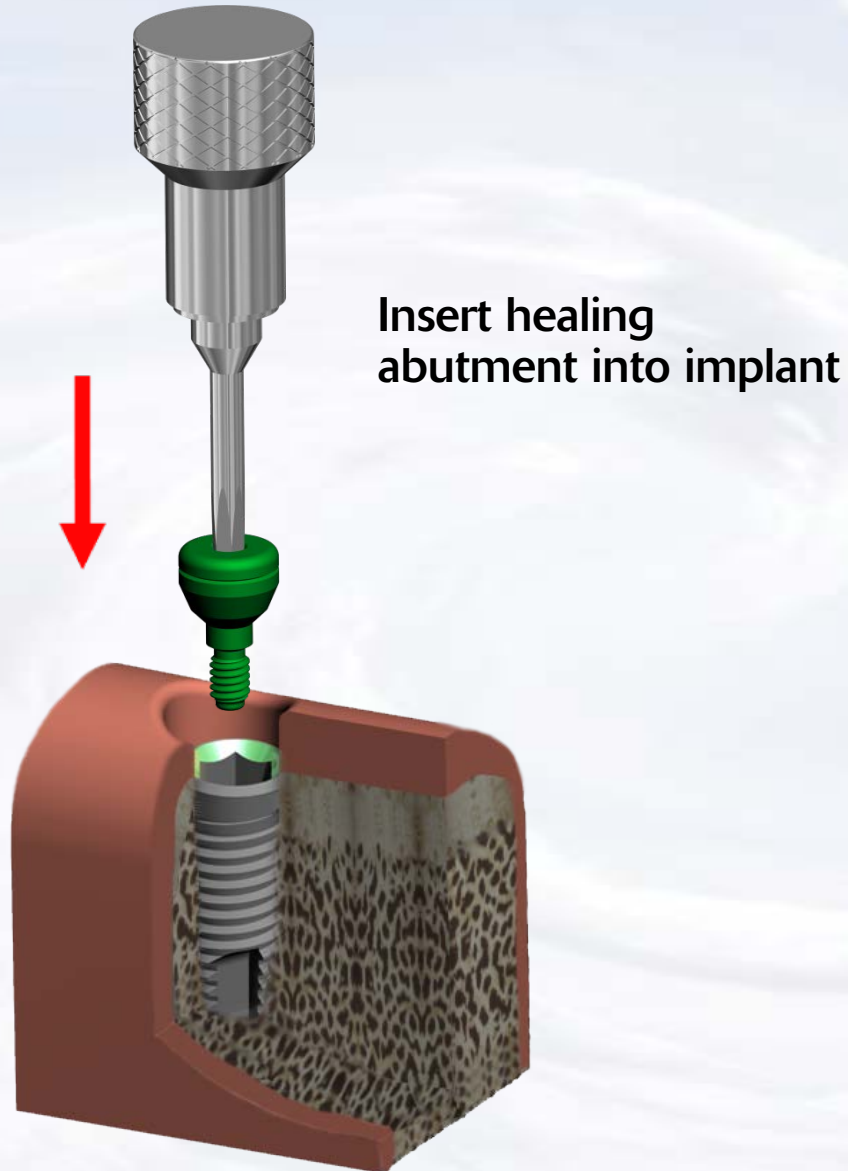


Remove impression transfer from implant



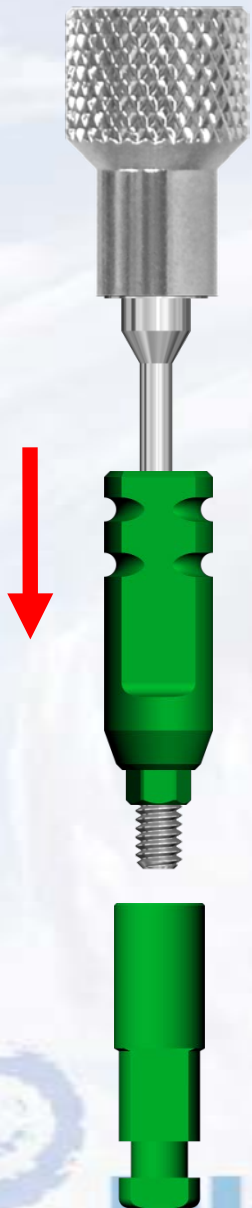
Blue Sky Bio

# Internal Hex UCLA Abutment

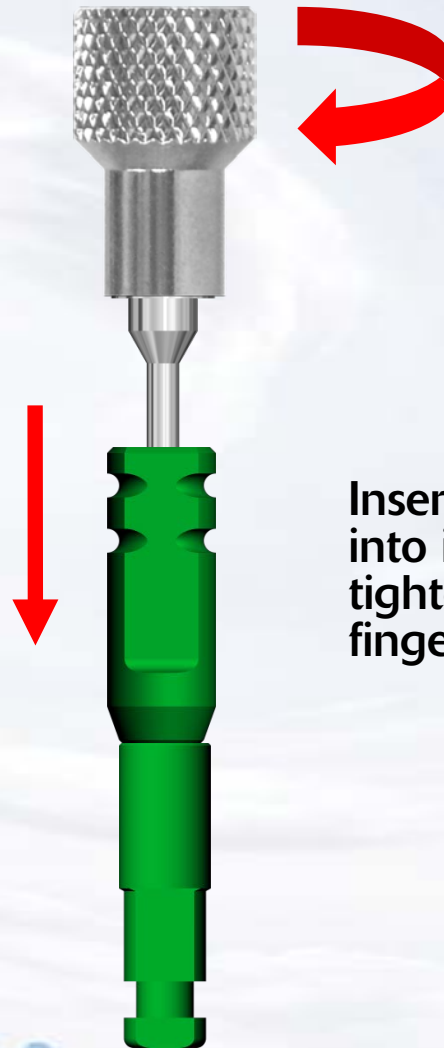


Blue Sky Bio

# Internal Hex UCLA Abutment



Insert driver into  
Impression Transfer

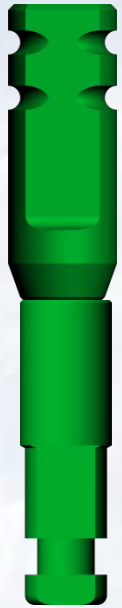


Insert Impression Transfer  
into implant level analog and  
tighten fixation screw with  
finger pressure

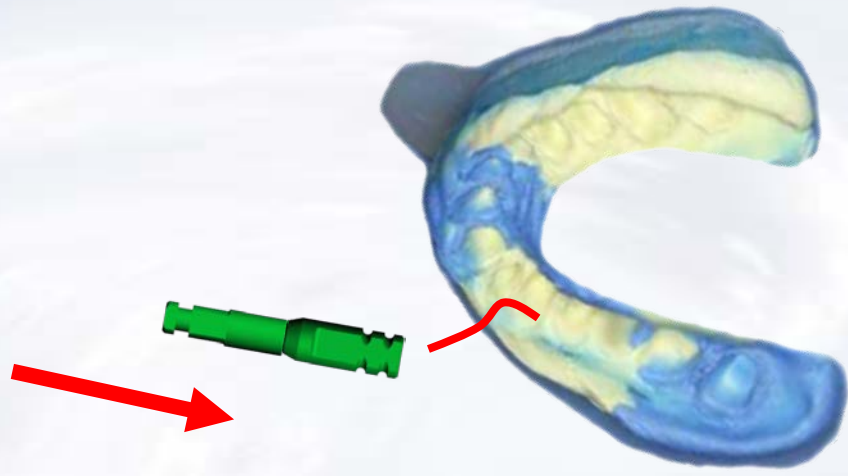


Blue Sky Bio

# Internal Hex UCLA Abutment

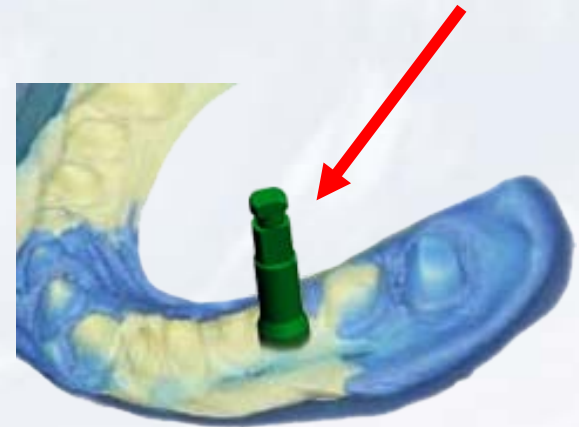


Assembled Impression  
Transfer with implant  
level analog



Insert transfer/analog  
assembly into impression

UCLA Abutment/Analog  
assembly inside impression



# Internal Hex UCLA Abutment

Apply soft tissue replica material around implant level analog



Pour dental stone into impression

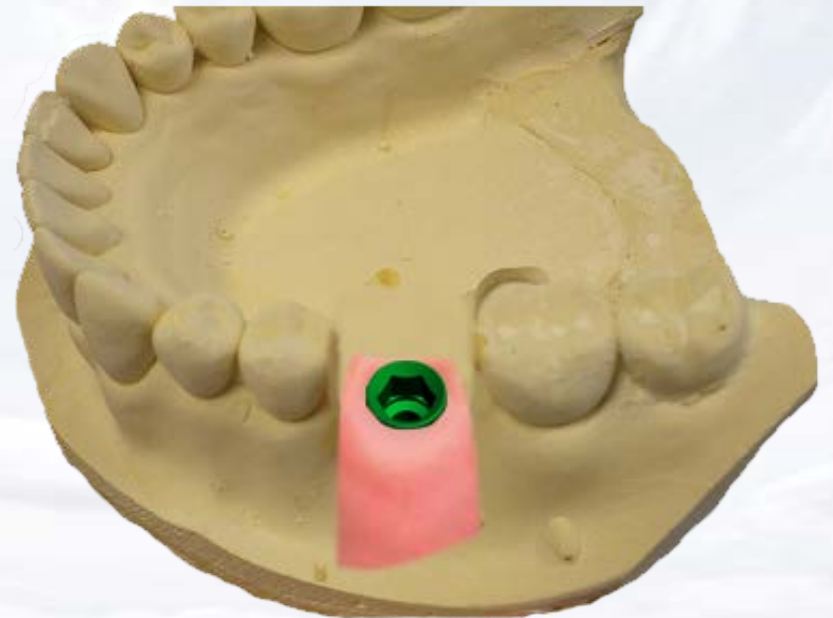
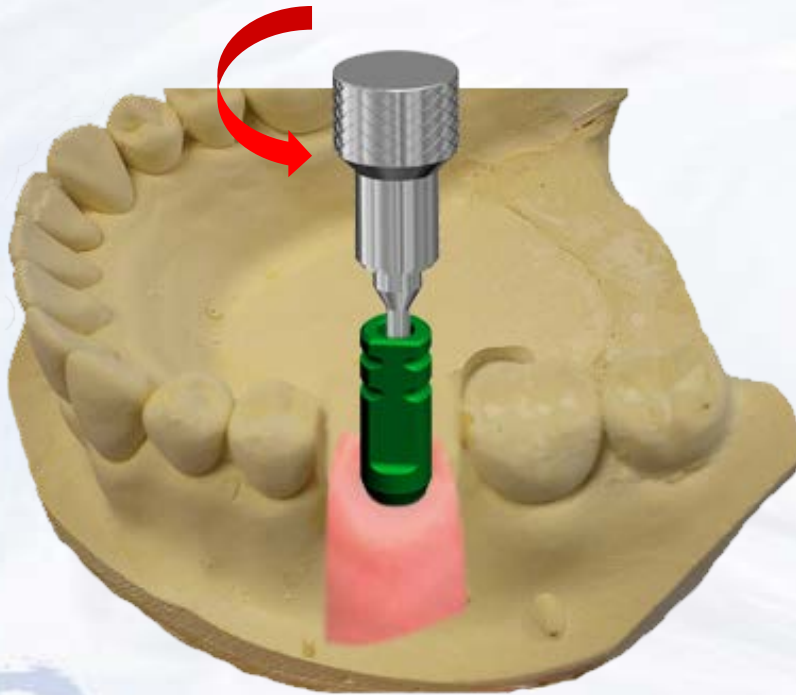


**Blue Sky Bio**

# Internal Hex UCLA Abutment

Remove model from impression and loosen the fixation screw of the impression transfer by turning screw driver counter clockwise

Remove impression transfer from analog

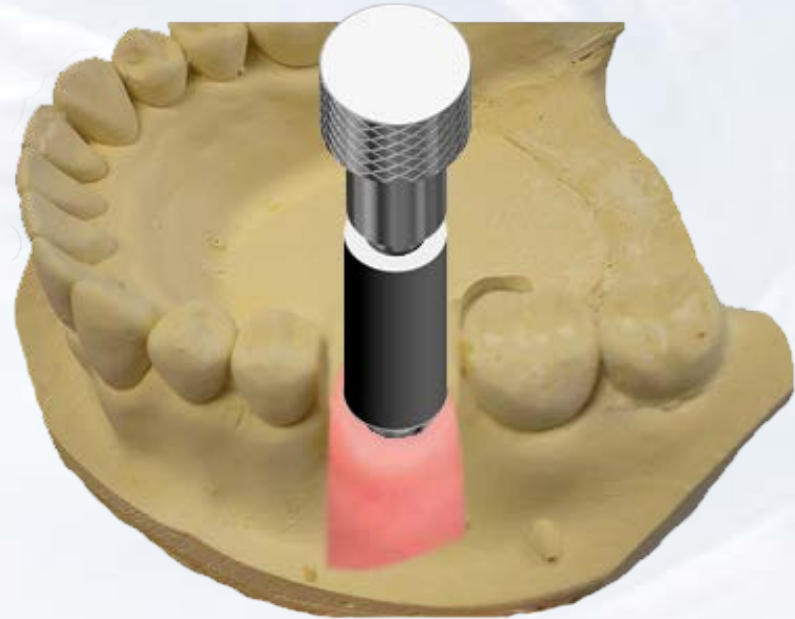


Blue Sky Bio

# Internal Hex UCLA Abutment



Insert screw driver assembly into fixation screw in the UCLA abutment



Insert the UCLA abutment into the implant level analog ensuring the appropriate orientation. Hand tighten the fixation screw within the UCLA abutment



**Blue Sky Bio**

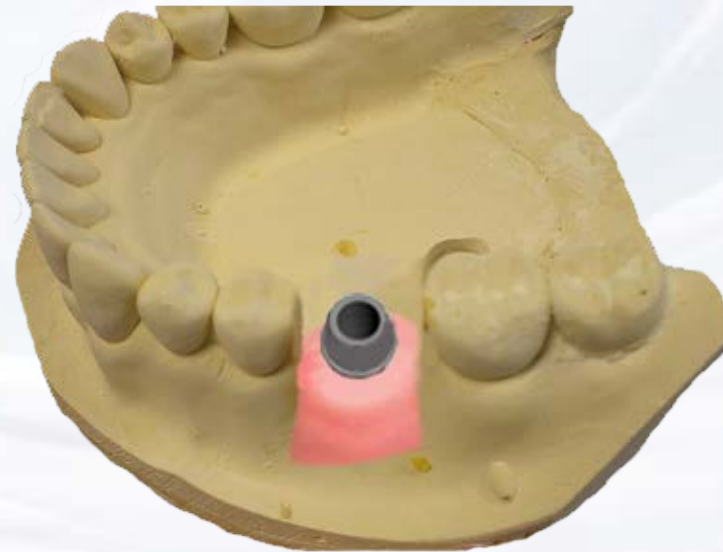


# Internal Hex UCLA Abutment

Create a wax up of the desired shape of the abutment by subtracting or adding to the resin of the UCLA abutment



Cast and finish custom UCLA abutment



**Blue Sky Bio**

# Internal Hex UCLA Abutment

Seal the screw opening of the  
UCLA Abutment



Apply die spacer and wax up  
undercasting on the UCLA Abutment



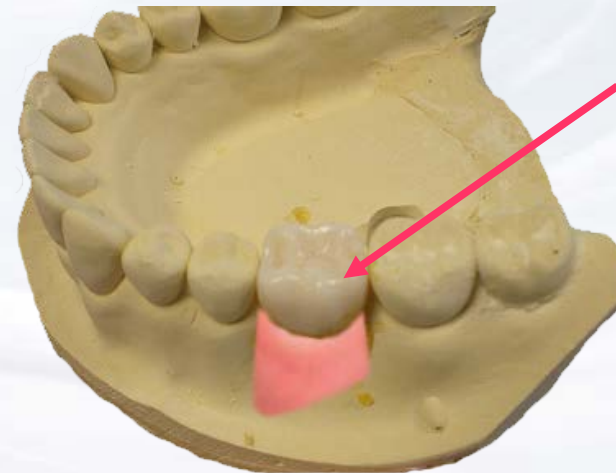
**Blue Sky Bio**

# Internal Hex UCLA Abutment

Cast wax up using a conventional technique and insert it in the casting on the stone model



Stack and fire the Ceramic in the usual manner

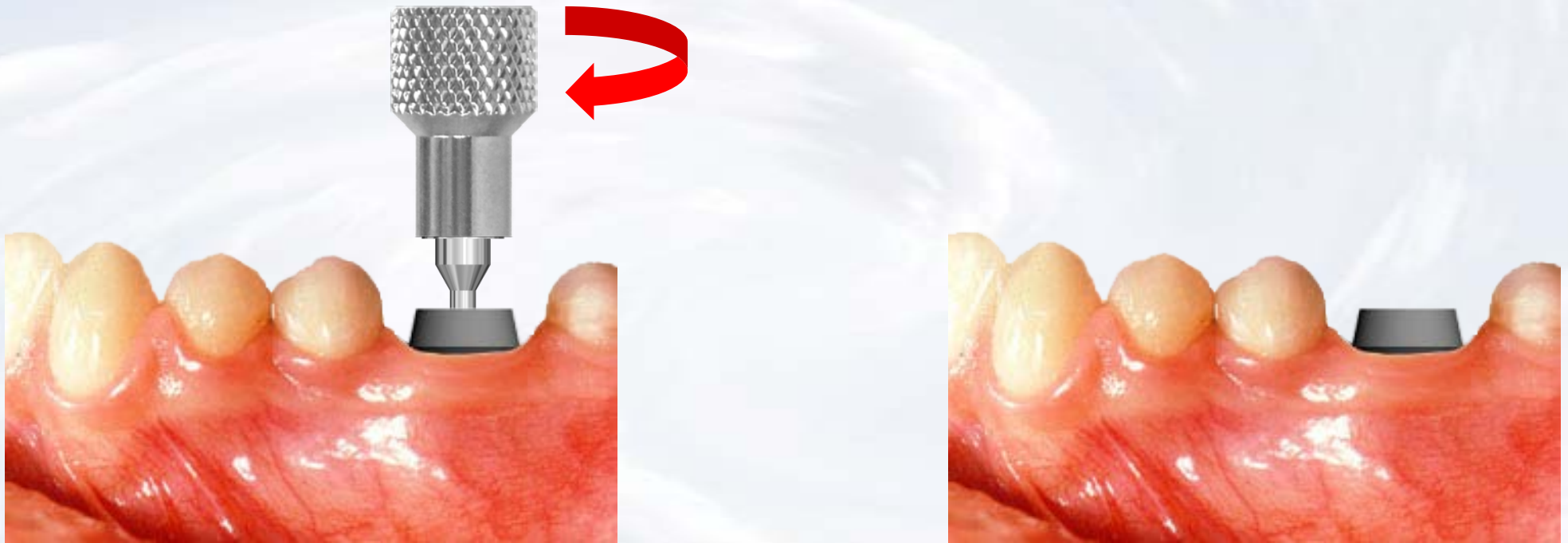


Porcelain crown on model



Blue Sky Bio

# Internal Hex UCLA Abutment



Insert the abutment into implant  
orienting it according to the  
instructions from the laboratory and  
tighten with driver



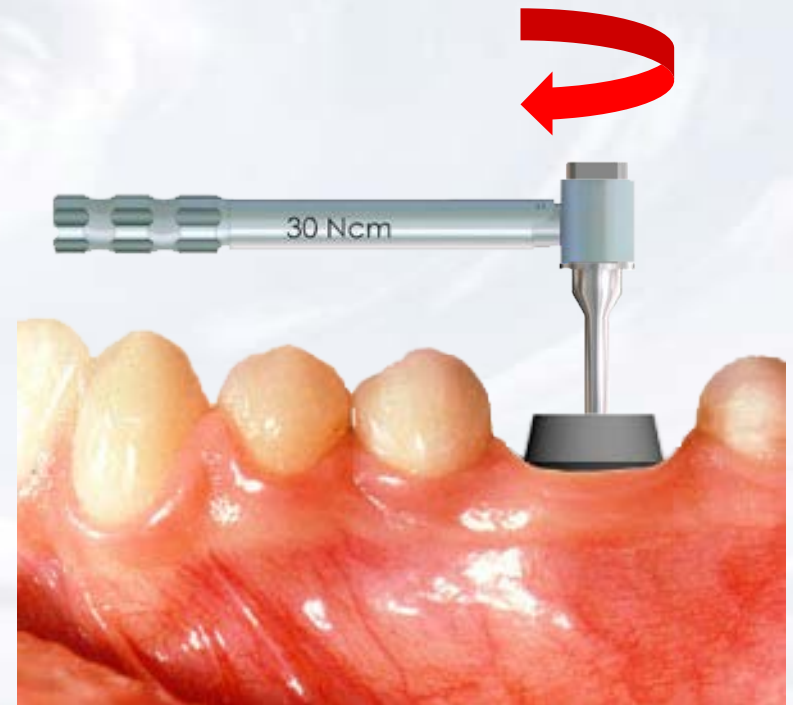
**Blue Sky Bio**

# Internal Hex UCLA Abutment

Insert the hex driver into the 30Ncm torque ratchet



Insert driver into the abutment screw tighten the screw until torque of 30 Ncm is reached and the head of the ratchet releases



Blue Sky Bio

# Internal Hex UCLA Abutment



Cement restoration on abutment



**Blue Sky Bio**