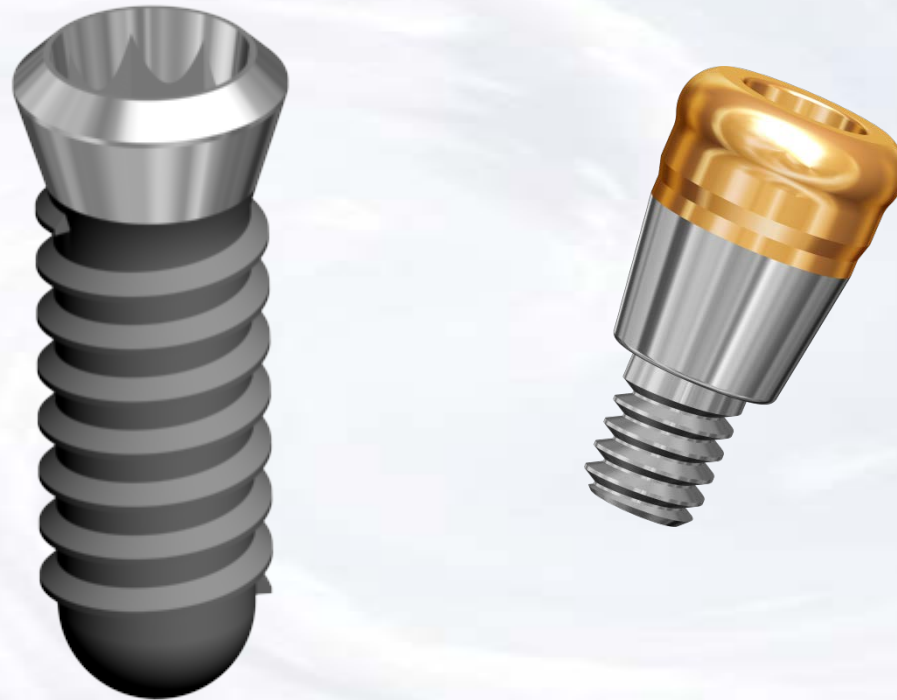
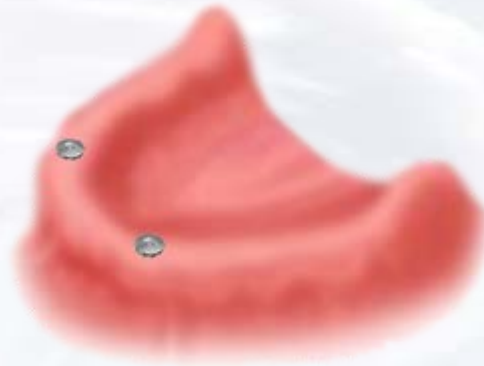


Overdenture Laboratory Technique for Tissue Level Implant



Blue Sky Bio

Overdenture Laboratory Technique for Tissue Level Implant








The presentation that follows lists only one combination of parts. Obviously the clinical situation may call for substitution of another part on this slide



Blue Sky Bio

Overdenture Laboratory Technique for Tissue Level Implant

	Size	Part #
	Torque/Ratchet Wrench	TR-900-01
	Thumbwheel/ITI Wrench Adapter	ITI-Adapter
	.048 Hex Driver short	SDS048
	.048 Hex Driver long	SDL048
	Insert Placement/Removal Instrument	TFSU

Prosthetic instruments needed



Blue Sky Bio

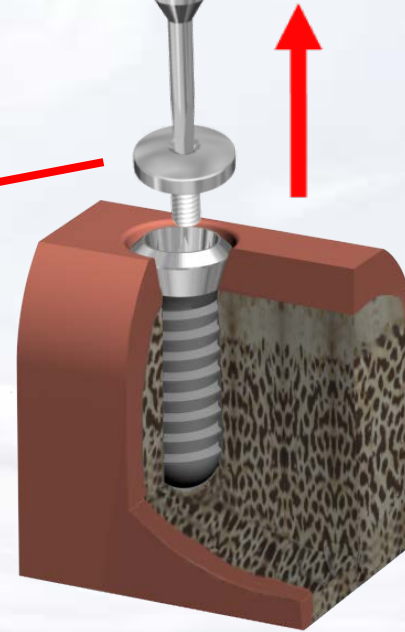
Overdenture Laboratory Technique for Tissue Level Implant

Assemble screw driver with
ITI - Adapter (thumb-wheel /
adapter)



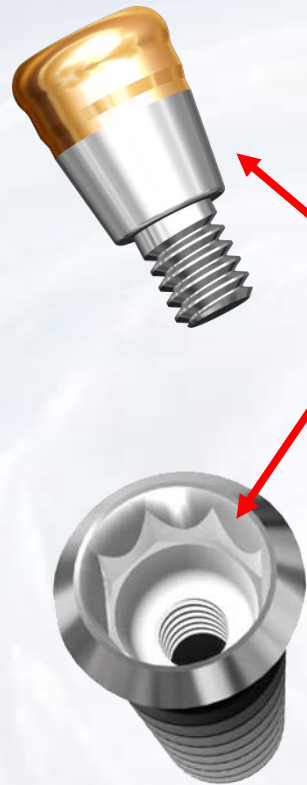
Insert assembled
screw driver into cover
screw and turn
counter clockwise

Remove cover screw
from implants

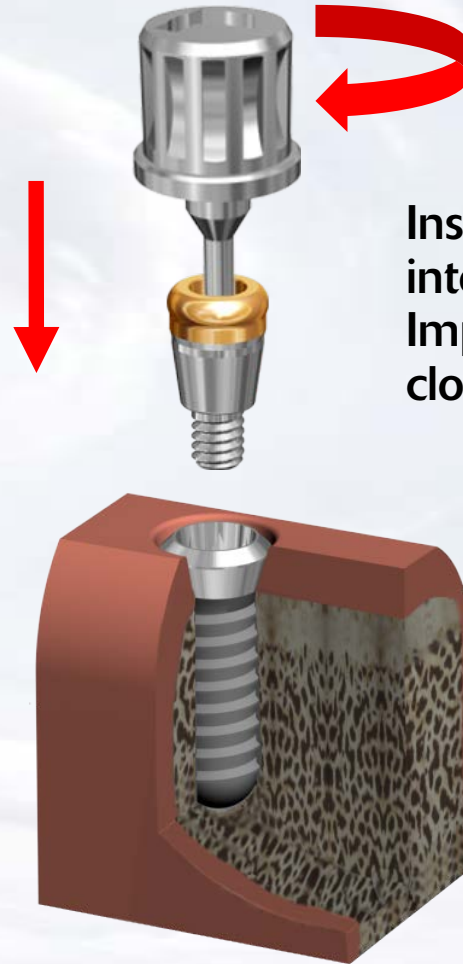


Blue Sky Bio

Overdenture Laboratory Technique for Tissue Level Implant



8 degree Morse
taper on the
outside of
the abutment
Matches the 8
degree Morse
taper within
the implant



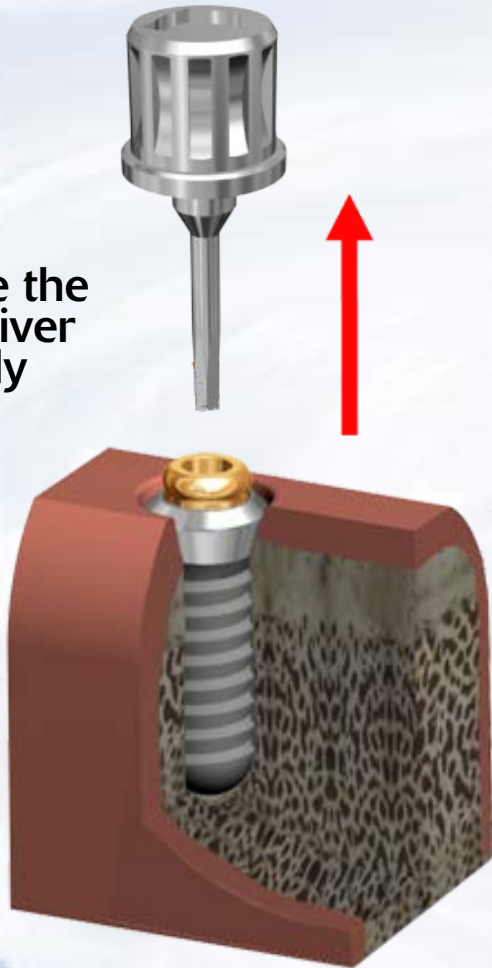
Insert the abutment
into the One Stage
Implant and rotate
clockwise until snug



Blue Sky Bio

Overdenture Laboratory Technique for Tissue Level Implant

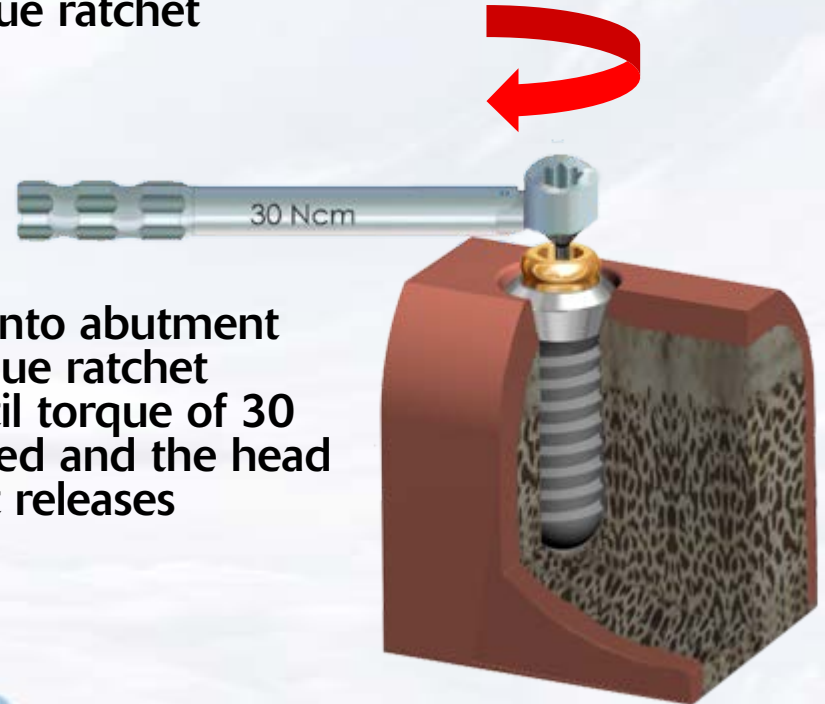
Remove the
screwdriver
assembly



Insert the Hex Driver within the
30Ncm torque ratchet

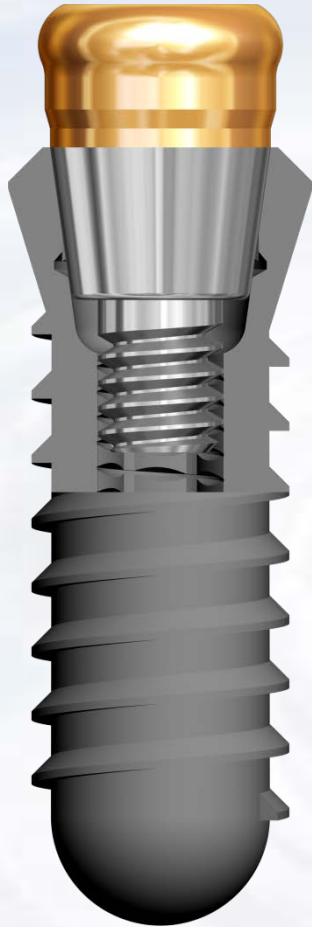


Insert driver into abutment
and turn torque ratchet
clockwise until torque of 30
Ncm is reached and the head
of the ratchet releases

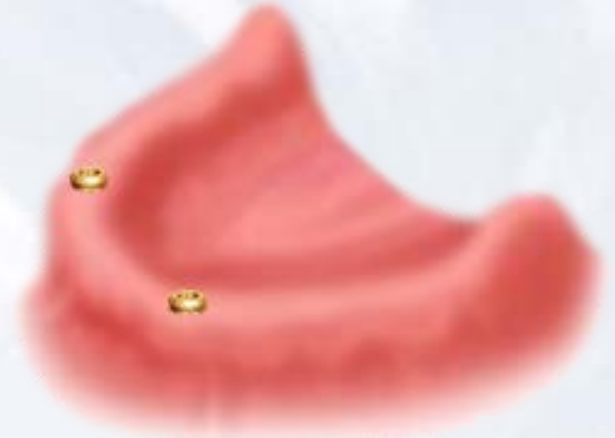


Blue Sky Bio

Overdenture Laboratory Technique for Tissue Level Implant



When the overdenture abutment is screwed into the implant at 30-35 Ncm the Morse taper will lock the abutment in place.

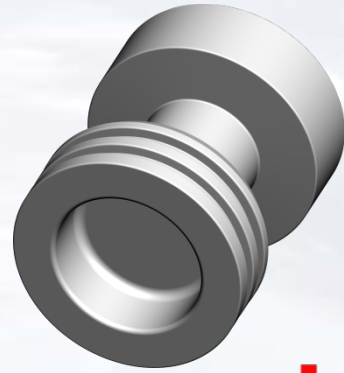


Abutments in place

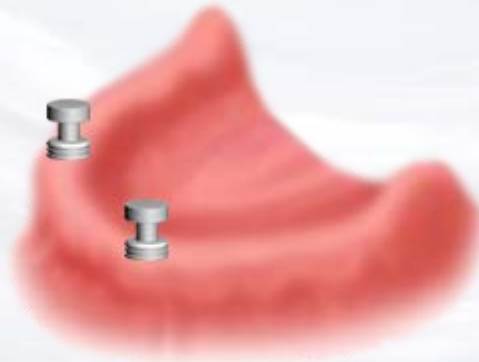


Blue Sky Bio

Overdenture Laboratory Technique for Tissue Level Implant

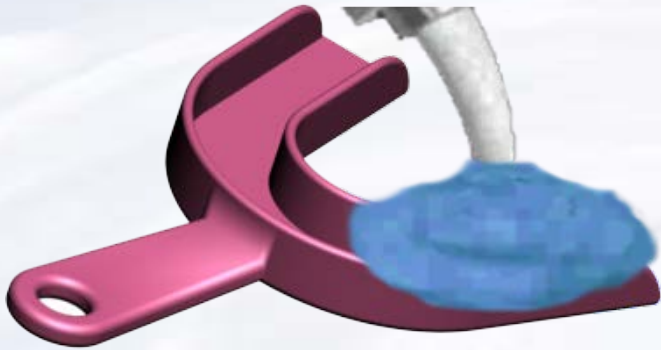


Snap impression transfer
on the abutments



Blue Sky Bio

Overdenture Laboratory Technique for Tissue Level Implant



Fill impression tray with
impression material and take
an impression for the
mastercast



Blue Sky Bio

Overdenture Laboratory Technique for Tissue Level Implant



After impression material has set remove impression from mouth picking up the impression transfers

Snap analogs into the impression transfers



Blue Sky Bio

Overdenture Laboratory Technique for Tissue Level Implant



Pour impression with model
stone and make master cast
with analogs in place



Blue Sky Bio

Overdenture Laboratory Technique for Tissue Level Implant



Place black processing insert
on the insertion tool

Snap black processing insert
into metal housing



Blue Sky Bio

Overdenture Laboratory Technique for Tissue Level Implant



Place housings with processing insert on the analogs and process the denture



Blue Sky Bio

Overdenture Laboratory Technique for Tissue Level Implant



Remove the black processing insert with the sharp point of the removal instrument



Place the insert with the desired retention into the housing



Blue Sky Bio

Overdenture Laboratory Technique for Tissue Level Implant



Finished prosthesis with
housings and inserts in place



Blue Sky Bio